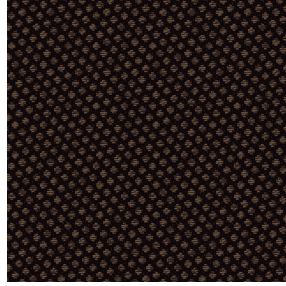


NOCLIN NATUREL 26
Printing support



GONIDIE Ebene 113
Print pattern



Visual not taking into account the printing medium, the final rendering may vary according to the chosen medium.

Printing support **NOCLIN NATUREL 26**

Print pattern **GONIDIE Ebene 113**

Blackout double-side, linen and textured effect, the Noclin is also available as a printing support, to bring depth and relief to your patterns, please note : the beige background may modify the final appearance.

Technical properties



Flame retardant



Thermal

Applications Roman blinds - Panel curtains - Curtains

Composition Polyester enduction acrylique

Weight 380 g/m²

Width 280 cm

Fabric direction Room High Direction

Fitting ↔ 0,0 cm ↓ 0,0 cm

Maintenance advice    

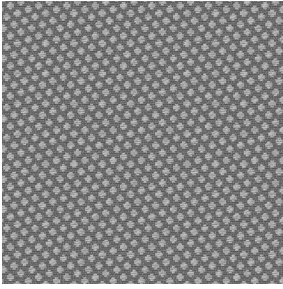
Label

Minimum order 25 linear(s) metter(s)

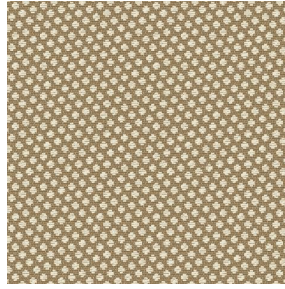
Technical characteristics

Flame retardant	B1 / IMO PASS	
Optical index	Light reflexion :	53 %
	Light absorption :	47 %
	Light transmission :	0 %
Thermal index	Solar reflexion :	64 %
	Solar absorption :	36 %
	Solar transmission :	0 %
	UV transmission :	0 %
	Gtot :	Gt 36 % Fc 61 %
Resilience	Lightfastness (units Class/8)	4
	Dimensional Stability (%)	
	Warp	-1
	Weft	-1
	Breaking Elongation	
	Warp	48
	Weft	72
Breaking load (daN)		
Warp	51	
Weft	84	

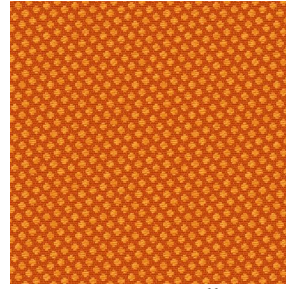
Print pattern GONIDIE



GONIDIE Souris 31



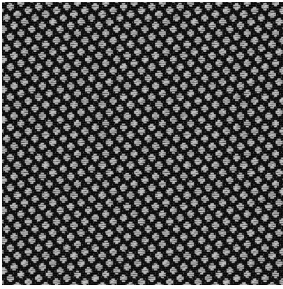
GONIDIE Beige 63



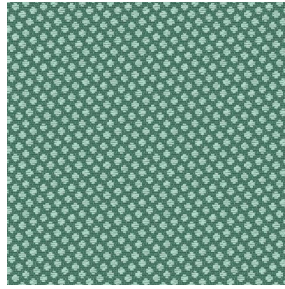
GONIDIE Citrouille 136



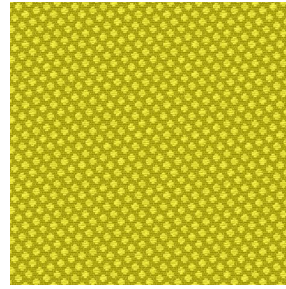
GONIDIE Glacier 43



GONIDIE Noir 10



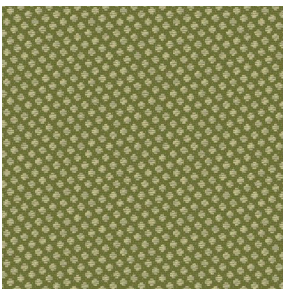
GONIDIE Céladon 135



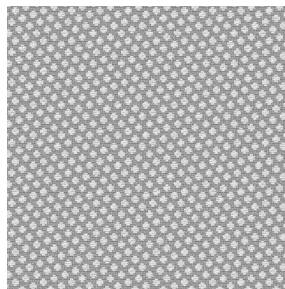
GONIDIE Anis 62



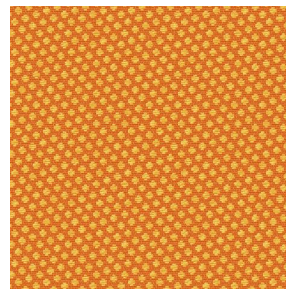
GONIDIE Perle 96



GONIDIE Mousse 92



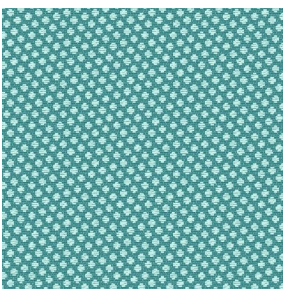
GONIDIE Tourterelle
138



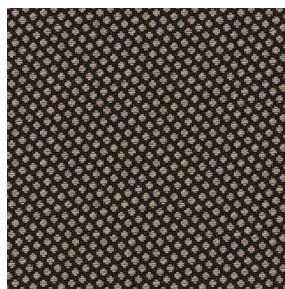
GONIDIE Brique 42



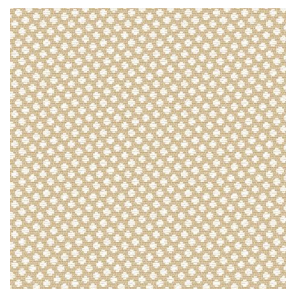
GONIDIE Opéra 104



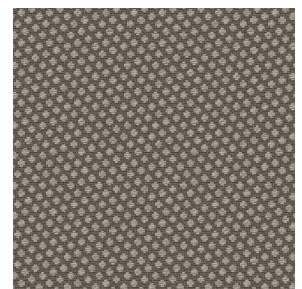
GONIDIE Pacifique 54



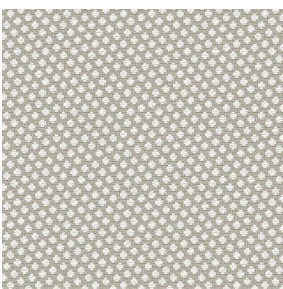
GONIDIE Brun 23



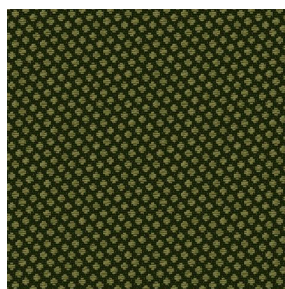
GONIDIE Crème 32



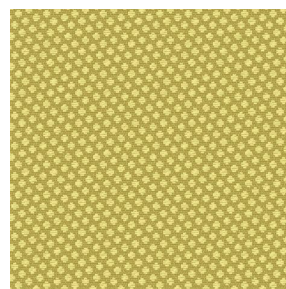
GONIDIE Taupe 95



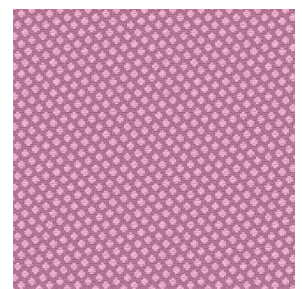
GONIDIE Lin 11



GONIDIE Lierre 124



GONIDIE Bergamote
121



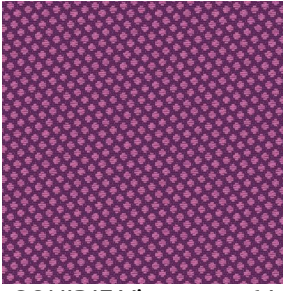
GONIDIE Hortensia 134



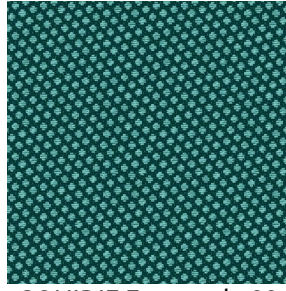
(Headquarters) SOTEXPRO - 510 route de Montchal - 42360 PANISSIÈRES - FRANCE - +33 4 77 27 60 60

Non-contractual photos and colors - Indicative fitting - Fitting may vary depending on support selected

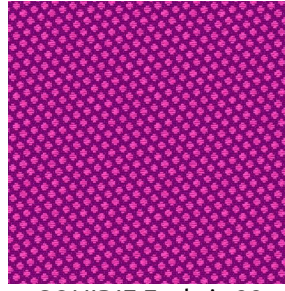
Print pattern GONIDIE



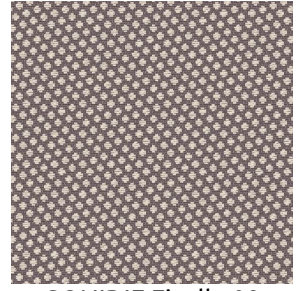
GONIDIE Vieux rose 64



GONIDIE Emeraude 88



GONIDIE Fuchsia 33



GONIDIE Ficelle 09



(Headquarters) SOTEXPRO - 510 route de Montchal - 42360 PANISSIÈRES - FRANCE - +33 4 77 27 60 60

Non-contractual photos and colors - Indicative fitting - Fitting may vary depending on support selected