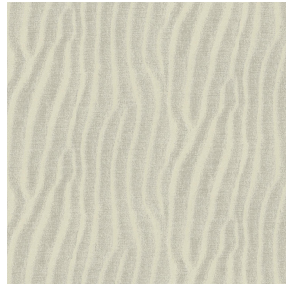




**NOCLIN NATUREL 26**  
Printing support



**SABLE Lin 11**  
Print pattern



Visual not taking into account the printing medium, the final rendering may vary according to the chosen medium.

## Printing support **NOCLIN NATUREL 26**

### Print pattern **SABLE Lin 11**

Blackout double-side, linen and textured effect, the Noclin is also available as a printing support, to bring depth and relief to your patterns, please note : the beige background may modify the final appearance.

#### Technical properties



Flame retardant



Thermal

**Applications** Roman blinds - Panel curtains - Curtains

**Composition** Polyester enduction acrylique

**Weight** 380 g/m<sup>2</sup>

**Width** 280 cm

**Fabric direction** Room High Direction

**Fitting** ↔ 0,0 cm ↓ 0,0 cm

**Maintenance advice**

**Label**

**Minimum order** 25 linear(s) metter(s)

## Technical characteristics

Flame retardant	B1 / IMO PASS	
Optical index	Light reflexion :	53 %
	Light absorption :	47 %
	Light transmission :	0 %
Thermal index	Solar reflexion :	64 %
	Solar absorption :	36 %
	Solar transmission :	0 %
	UV transmission :	0 %
	Gtot :	<b>Gt 36 % Fc 61 %</b>
Resilience	Lightfastness (units Class/8)	4
	Dimentional Stability (%)	
	Warp	-1
	Weft	-1
	Breaking Elongation	
	Warp	48
	Weft	72
Breaking load (daN)		
Warp	51	
Weft	84	

## Print pattern SABLE



SABLE Rose 129



SABLE Sable 67



SABLE Absinthe 132



SABLE Ivoire 115



SABLE Noir 10



SABLE Souris 31



SABLE Gris 97



SABLE Jasmin 74



(Headquarters) SOTEXPRO - 510 route de Montchal - 42360 PANISSIÈRES - FRANCE - +33 4 77 27 60 60

*Non-contractual photos and colors - Indicative fitting - Fitting may vary depending on support selected*