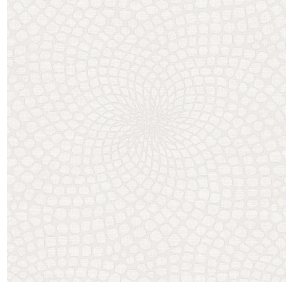




NOCLIN NATUREL 26
Printing support



MELODY Naturel 26
Print pattern



Visual not taking into account the printing medium, the final rendering may vary according to the chosen medium.

Printing support **NOCLIN NATUREL 26**

Print pattern **MELODY Naturel 26**

Blackout double-side, linen and textured effect, the Noclin is also available as a printing support, to bring depth and relief to your patterns, please note : the beige background may modify the final appearance.

Technical properties



Flame retardant



Thermal

Applications Roman blinds - Panel curtains - Curtains

Composition Polyester enduction acrylique

Weight 380 g/m²

Width 280 cm

Fabric direction Room High Direction

Fitting ↔ 0,0 cm ↓ 0,0 cm

Maintenance advice

Label

Minimum order 25 linear(s) metter(s)

Technical characteristics

Flame retardant	B1 / IMO PASS	
Optical index	Light reflexion :	53 %
	Light absorption :	47 %
	Light transmission :	0 %
Thermal index	Solar reflexion :	64 %
	Solar absorption :	36 %
	Solar transmission :	0 %
	UV transmission :	0 %
	Gtot :	Gt 36 % Fc 61 %
Resilience	Lightfastness (units Class/8)	4
	Dimensional Stability (%)	
	Warp	-1
	Weft	-1
	Breaking Elongation	
	Warp	48
	Weft	72
Breaking load (daN)		
Warp	51	
Weft	84	

Print pattern MELODY



MELODY Vanille 51



MELODY Fuchsia 33



MELODY Anis 62



MELODY Lin 11



MELODY Orange 15



MELODY Ficelle 09



MELODY Turquoise 53



MELODY Acier 18



(Headquarters) SOTEXPRO - 510 route de Montchal - 42360 PANISSIÈRES - FRANCE - +33 4 77 27 60 60

Non-contractual photos and colors - Indicative fitting - Fitting may vary depending on support selected