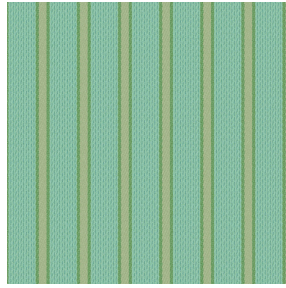


NOCLIN NATUREL 26
Printing support



FLAVIE Printemps 130
Print pattern

Printing support **NOCLIN NATUREL 26**

Print pattern **FLAVIE Printemps 130**

Blackout double-side, linen and textured effect, the Noclin is also available as a printing support, to bring depth and relief to your patterns, please note : the beige background may modify the final appearance.

Technical properties



Flame retardant



Thermal

Applications Roman blinds - Panel curtains - Curtains

Composition Polyester enduction acrylique

Weight 380 g/m² 1064 g/m²

Width 280 cm

Fabric direction Room High Direction

Fitting ↔ 18.0 cm ↓ 16.0 cm

Maintenance advice   

Label

Minimum order 25 linear(s) metter(s)



Visual not taking into account the printing medium, the final rendering may vary according to the chosen medium.

Technical characteristics

Flame retardant	B1 / IMO PASS		
Optical index	Light reflexion :	53 %	
	Light absorption :	47 %	
	Light transmission :	0 %	
Thermal index	Solar reflexion :	64 %	
	Solar absorption :	36 %	
	Solar transmission :	0 %	
	UV transmission :	0 %	
	Gtot :	Gt 36 % Fc 61 %	
Resilience	Lightfastness (units Class/8)	4	
	Dimentional Stability (%)	Warp	-1
		Weft	-1
	Breaking Elongation	Warp	48
		Weft	72
	Breaking load (daN)	Warp	51
		Weft	84