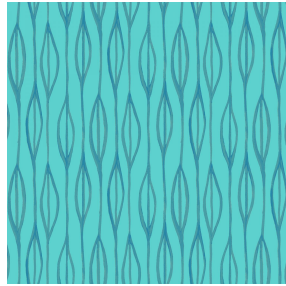


**NOCTEA BPI 00**  
Printing support



**YENDI Lagon 110**  
Print pattern



## Printing support **NOCTEA BPI 00** Print pattern **YENDI Lagon 110**

This fabric is used as a print medium.

### Technical properties



Flame retardant

**Applications** Roman blinds - Roller blinds - Panel curtains - Lining - Curtains

**Composition** 100% polyester with white flocked acrylic backing

**Weight** 310 g/m<sup>2</sup>

**Width** 280 cm

**Fabric direction** Room High Direction

**Fitting** ↔ 24.0 cm ↓ 20.0 cm

**Maintenance advice**     

**Label**

**Minimum order** 25 linear(s) meter(s)



Visual not taking into account the printing medium, the final rendering may vary according to the chosen medium.

## Technical characteristics

Flame retardant

M1 / BS 5867 TYPE C / B1 / IMO PASS

Optical index

Light reflexion : 71 %

Light absorption : 29 %

Light transmission : 0 %

Thermal index

Solar reflexion : 66 %

Solar absorption : 34 %

Solar transmission : 0 %

UV transmission : 0 %

Gtot : **Gt 35 % Fc 60 %**

Resilience

Lightfastness (units Class/8) 4

Dimensional Stability (%)

Warp -0,5

Weft 0

Breaking Elongation

Warp 19

Weft 22

Breaking load (daN)

Warp 37

Weft 57

# Print pattern YENDI



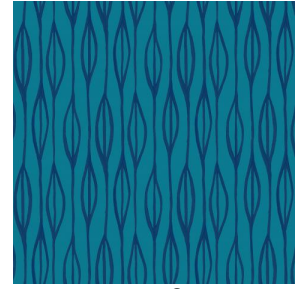
YENDI Anis 62



YENDI Lilas 19



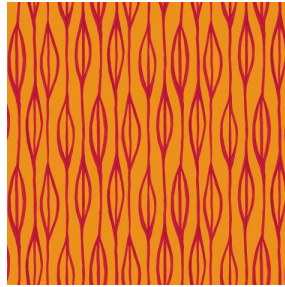
YENDI Opéra 104



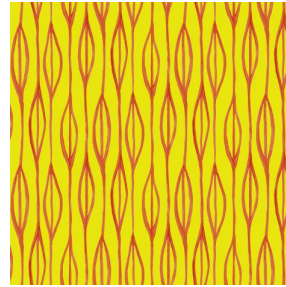
YENDI Pacifique 54



YENDI Sapin 126



YENDI Sanguine 05



YENDI Soleil 127



YENDI Terre 107



(Headquarters) SOTEXPRO - 510 route de Montchal - 42360 PANISSIÈRES - FRANCE - +33 4 77 27 60 60  
(Showroom) Le LAB' SOTEXPRO - 4 rue du Mail - 75002 PARIS - FRANCE

Non-contractual photos and colors - Indicative fitting - Fitting may vary depending on support selected