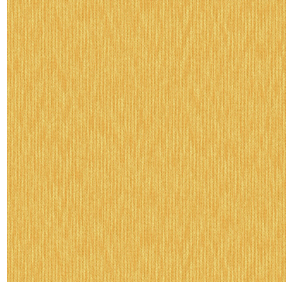




NOCTEA BPI 00
Printing support



CALI Soleil 127
Print pattern

Printing support **NOCTEA BPI 00** Print pattern **CALI Soleil 127**

This fabric is used as a print medium.

Technical properties



Flame retardant

Applications Roman blinds - Roller blinds - Panel curtains - Lining - Curtains

Composition 100% polyester with white flocked acrylic backing

Weight 310 g/m²

Width 280 cm

Fabric direction Room High Direction

Fitting ↔ 33.0 cm ↓ 33.0 cm

Maintenance advice     

Label

Minimum order 25 linear(s) meter(s)



Visual not taking into account the printing medium, the final rendering may vary according to the chosen medium.

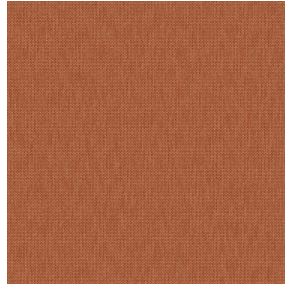
Technical characteristics

Flame retardant	M1 / BS 5867 TYPE C / B1 / IMO PASS	
Optical index	Light reflexion :	71 %
	Light absorption :	29 %
	Light transmission :	0 %
Thermal index	Solar reflexion :	66 %
	Solar absorption :	34 %
	Solar transmission :	0 %
	UV transmission :	0 %
	Gtot :	Gt 35 % Fc 60 %
Resilience	Lightfastness (units Class/8)	4
	Dimensional Stability (%)	
	Warp	-0,5
	Weft	0
	Breaking Elongation	
	Warp	19
	Weft	22
	Breaking load (daN)	
Warp	37	
Weft	57	

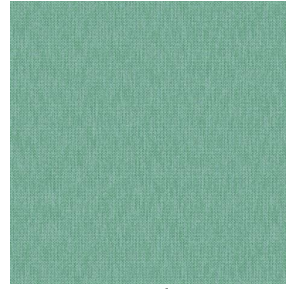
Print pattern CALI



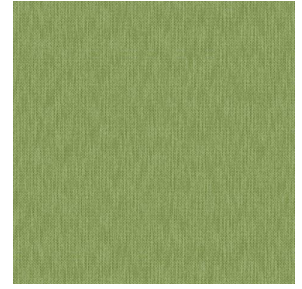
CALI Orange 15



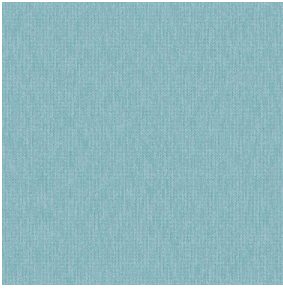
CALI Terracotta 65



CALI Jade 116



CALI Lierre 24



CALI Etang 165



CALI Naturel 26



(Headquarters) SOTEXPRO - 510 route de Montchal - 42360 PANISSIÈRES - FRANCE - +33 4 77 27 60 60
(Showroom) Le LAB' SOTEXPRO - 4 rue du Mail - 75002 PARIS - FRANCE

Non-contractual photos and colors - Indicative fitting - Fitting may vary depending on support selected