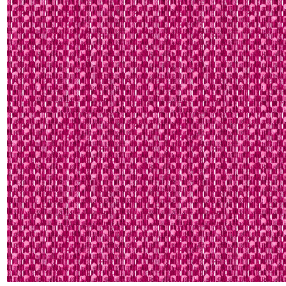


NOCTEA BPI 00
Printing support



RIVE Fuchsia 33
Print pattern



Printing support **NOCTEA BPI 00** Print pattern **RIVE Fuchsia 33**

This fabric is used as a print medium.

Technical properties



Flame retardant

Applications Roman blinds - Roller blinds - Panel curtains - Lining - Curtains

Composition 100% polyester with white flocked acrylic backing

Weight 310 g/m²

Width 280 cm

Fabric direction Room High Direction

Fitting ↔ cm ↓ cm

Maintenance advice

Label

Minimum order 25 linear(s) meter(s)

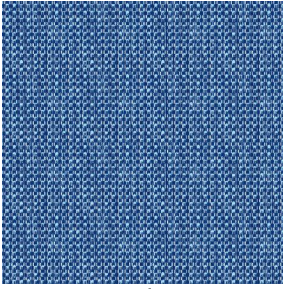


Visual not taking into account the printing medium, the final rendering may vary according to the chosen medium.

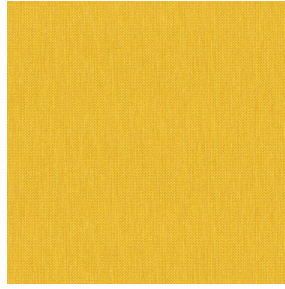
Technical characteristics

| | | |
|-----------------|-------------------------------------|-----------------|
| Flame retardant | M1 / BS 5867 TYPE C / B1 / IMO PASS | |
| Optical index | Light reflexion : | 71 % |
| | Light absorption : | 29 % |
| | Light transmission : | 0 % |
| Thermal index | Solar reflexion : | 66 % |
| | Solar absorption : | 34 % |
| | Solar transmission : | 0 % |
| | UV transmission : | 0 % |
| | Gtot : | Gt 35 % Fc 60 % |
| Resilience | Lightfastness (units Class/8) | 4 |
| | Dimensional Stability (%) | |
| | Warp | -0,5 |
| | Weft | 0 |
| | Breaking Elongation | |
| | Warp | 19 |
| | Weft | 22 |
| | Breaking load (daN) | |
| Warp | 37 | |
| Weft | 57 | |

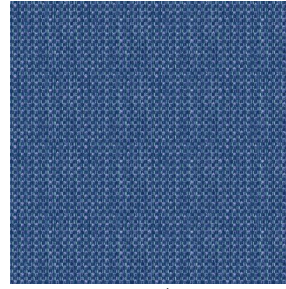
Print pattern RIVE



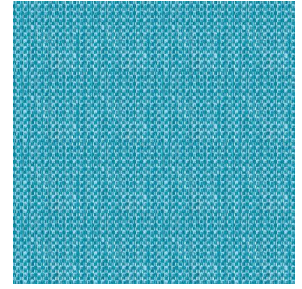
RIVE Bleu 41



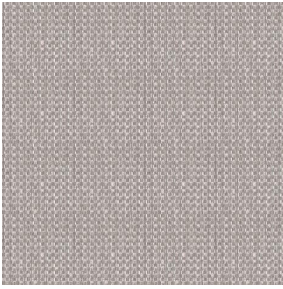
RIVE Jaune 46



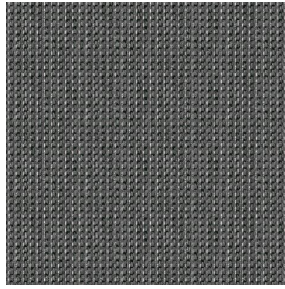
RIVE Océan 91



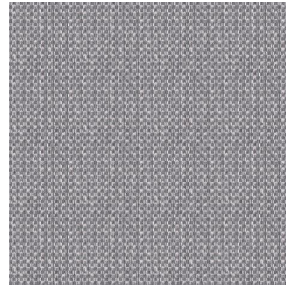
RIVE Turquoise 53



RIVE Sable 67



RIVE Taupe 95



RIVE Gris 97



(Headquarters) SOTEXPRO - 510 route de Montchal - 42360 PANISSIÈRES - FRANCE - +33 4 77 27 60 60
(Showroom) Le LAB' SOTEXPRO - 4 rue du Mail - 75002 PARIS - FRANCE

Non-contractual photos and colors - Indicative fitting - Fitting may vary depending on support selected