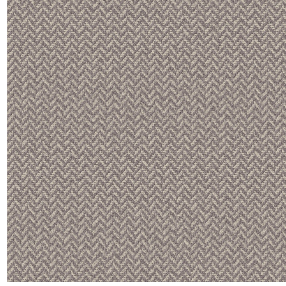




**NOCTEA BPI 00**  
Printing support



**SCOURTIN Ficelle 09**  
Print pattern

## Printing support **NOCTEA BPI 00** Print pattern **SCOURTIN Ficelle 09**

This fabric is used as a print medium.

### Technical properties



Flame retardant

**Applications** Roman blinds - Roller blinds - Panel curtains - Lining - Curtains

**Composition** 100% polyester with white flocked acrylic backing

**Weight** 310 g/m<sup>2</sup>

**Width** 280 cm

**Fabric direction** Room High Direction

**Fitting** ↔ cm ↓ cm

**Maintenance advice**

**Label**

**Minimum order** 25 linear(s) meter(s)



Visual not taking into account the printing medium, the final rendering may vary according to the chosen medium.

## Technical characteristics

Flame retardant	M1 / BS 5867 TYPE C / B1 / IMO PASS	
Optical index	Light reflexion :	71 %
	Light absorption :	29 %
	Light transmission :	0 %
Thermal index	Solar reflexion :	66 %
	Solar absorption :	34 %
	Solar transmission :	0 %
	UV transmission :	0 %
	Gtot :	Gt 35 % Fc 60 %
Resilience	Lightfastness (units Class/8)	4
	Dimensional Stability (%)	
	Warp	-0,5
	Weft	0
	Breaking Elongation	
	Warp	19
	Weft	22
	Breaking load (daN)	
Warp	37	
Weft	57	



# Print pattern SCOURTIN



SCOURTIN Beige 63



SCOURTIN Fuchsia 33



SCOURTIN Sapin 126



SCOURTIN Bergamote  
121



SCOURTIN Anthracite  
38



SCOURTIN Violine 105



SCOURTIN Pacifique 54



SCOURTIN Rose 129



SCOURTIN Blanc 01



SCOURTIN Lin 11



SCOURTIN Naturel 26



SCOURTIN Citrouille  
136



SCOURTIN Turquoise 53



SCOURTIN Brun 23



SCOURTIN Hortensia  
134



SCOURTIN Orage 123



SCOURTIN Rubis 59



SCOURTIN Maïs 37



SCOURTIN Céladon 135



SCOURTIN Ebene 113



(Headquarters) SOTEXPRO - 510 route de Montchal - 42360 PANISSIÈRES - FRANCE - +33 4 77 27 60 60  
(Showroom) Le LAB' SOTEXPRO - 4 rue du Mail - 75002 PARIS - FRANCE

Non-contractual photos and colors - Indicative fitting - Fitting may vary depending on support selected



## Print pattern SCOURTIN



SCOURTIN Tourterelle  
138



SCOURTIN Titanium 98



SCOURTIN Lagon 110



SCOURTIN Gris 97



(Headquarters) SOTEXPRO - 510 route de Montchal - 42360 PANISSIÈRES - FRANCE - +33 4 77 27 60 60  
(Showroom) Le LAB' SOTEXPRO - 4 rue du Mail - 75002 PARIS - FRANCE

Non-contractual photos and colors - Indicative fitting - Fitting may vary depending on support selected