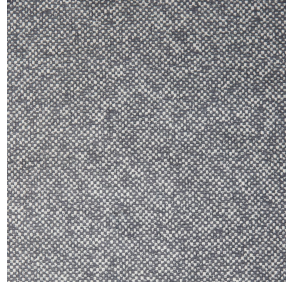




NOCTEA BPI 00
Printing support



ANATOLE Ficelle 09
Print pattern



Printing support NOCTEA BPI 00 Print pattern ANATOLE Ficelle 09

This fabric is used as a print medium.

Technical properties



Flame retardant

Applications Roman blinds - Roller blinds - Panel curtains - Lining - Curtains

Composition 100% polyester with white flocked acrylic backing

Weight 310 g/m²

Width 280 cm

Fabric direction Room High Direction

Fitting ↔ cm ↓ cm

Maintenance advice

Label

Minimum order 25 linear(s) meter(s)



Visual not taking into account the printing medium, the final rendering may vary according to the chosen medium.

Technical characteristics

Flame retardant

M1 / BS 5867 TYPE C / B1 / IMO PASS

Optical index

Light reflexion : 71 %

Light absorption : 29 %

Light transmission : 0 %

Thermal index

Solar reflexion : 66 %

Solar absorption : 34 %

Solar transmission : 0 %

UV transmission : 0 %

Gtot : Gt 35 % Fc 60 %

Resilience

Lightfastness (units Class/8) 4

Dimensional Stability (%)

Warp -0,5

Weft 0

Breaking Elongation

Warp 19

Weft 22

Breaking load (daN)

Warp 37

Weft 57

Print pattern ANATOLE



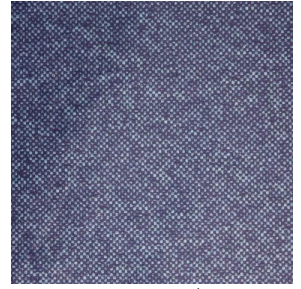
ANATOLE Naturel 26



ANATOLE lin 11



ANATOLE Celadon 135



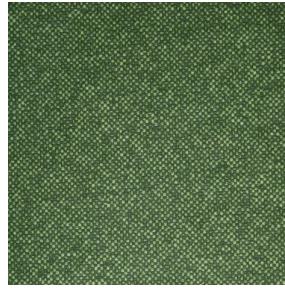
ANATOLE Océan 91



ANATOLE Titanium 98



ANATOLE Cactus 36



ANATOLE mousse 92



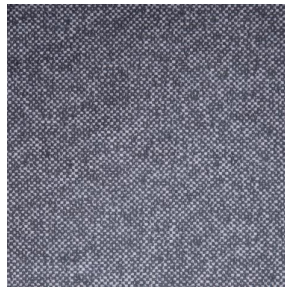
ANATOLE Or 94



ANATOLE Chaudron
118



ANATOLE Amarante
108



ANATOLE Taupe 95



(Headquarters) SOTEXPRO - 510 route de Montchal - 42360 PANISSIÈRES - FRANCE - +33 4 77 27 60 60
(Showroom) Le LAB' SOTEXPRO - 4 rue du Mail - 75002 PARIS - FRANCE

Non-contractual photos and colors - Indicative fitting - Fitting may vary depending on support selected