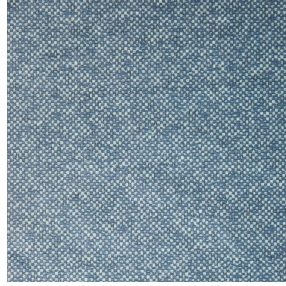




NOCTEA BPI 00
Printing support



ANATOLE Celadon 135
Print pattern



Printing support NOCTEA BPI 00 Print pattern ANATOLE Celadon 135

This fabric is used as a print medium.

Technical properties



Flame retardant

Applications Roman blinds - Roller blinds - Panel curtains - Lining - Curtains

Composition 100% polyester with white flocked acrylic backing

Weight 310 g/m²

Width 280 cm

Fabric direction Room High Direction

Fitting ↔ cm ↓ cm

Maintenance advice

Label

Minimum order 25 linear(s) meter(s)



Visual not taking into account the printing medium, the final rendering may vary according to the chosen medium.

Technical characteristics

| | | |
|---------------------------|-------------------------------------|-------------------------------|
| Flame retardant | M1 / BS 5867 TYPE C / B1 / IMO PASS | |
| Optical index | Light reflexion : | 71 % |
| | Light absorption : | 29 % |
| | Light transmission : | 0 % |
| Thermal index | Solar reflexion : | 66 % |
| | Solar absorption : | 34 % |
| | Solar transmission : | 0 % |
| | UV transmission : | 0 % |
| | Gtot : | Gt 35 % Fc 60 % |
| | Resilience | Lightfastness (units Class/8) |
| Dimensional Stability (%) | | |
| Warp | | -0,5 |
| Weft | | 0 |
| Breaking Elongation | | |
| Warp | | 19 |
| Weft | | 22 |
| Breaking load (daN) | | |
| Warp | | 37 |
| Weft | 57 | |

Print pattern ANATOLE



ANATOLE Naturel 26



ANATOLE lin 11



ANATOLE Ficelle 09



ANATOLE Océan 91



ANATOLE Titanium 98



ANATOLE Cactus 36



ANATOLE mousse 92



ANATOLE Or 94



ANATOLE Chaudron
118



ANATOLE Amarante
108



ANATOLE Taupe 95



(Headquarters) SOTEXPRO - 510 route de Montchal - 42360 PANISSIÈRES - FRANCE - +33 4 77 27 60 60
(Showroom) Le LAB' SOTEXPRO - 4 rue du Mail - 75002 PARIS - FRANCE

Non-contractual photos and colors - Indicative fitting - Fitting may vary depending on support selected