



NOCTEA BPI 00
Printing support



RIVE Taupe 95
Print pattern



Printing support **NOCTEA BPI 00** Print pattern **RIVE Taupe 95**

This fabric is used as a print medium.

Technical properties



Flame retardant

Applications Roman blinds - Roller blinds - Panel curtains - Lining - Curtains

Composition 100% polyester with white flocked acrylic backing

Weight 310 g/m²

Width 280 cm

Fabric direction Room High Direction

Fitting ↔ 0.0 cm ↓ 0.0 cm

Maintenance advice     

Label

Minimum order 25 linear(s) meter(s)



Visual not taking into account the printing medium, the final rendering may vary according to the chosen medium.

Technical characteristics

Flame retardant

M1 / BS 5867 TYPE C / B1 / IMO PASS

Optical index

Light reflexion : **71 %**

Light absorption : **29 %**

Light transmission : **0 %**

Thermal index

Solar reflexion : **66 %**

Solar absorption : **34 %**

Solar transmission : **0 %**

UV transmission : **0 %**

Gtot : **Gt 35 % Fc 60 %**

Resilience

Lightfastness (units Class/8) **4**

Dimensional Stability (%)

Warp **-0,5**

Weft **0**

Breaking Elongation

Warp **19**

Weft **22**

Breaking load (daN)

Warp **37**

Weft **57**

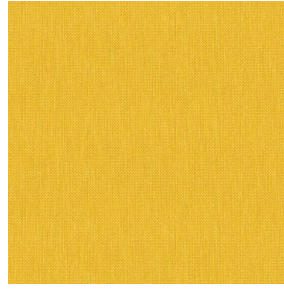
Print pattern RIVE



RIVE Fuchsia 33



RIVE Bleu 41



RIVE Jaune 46



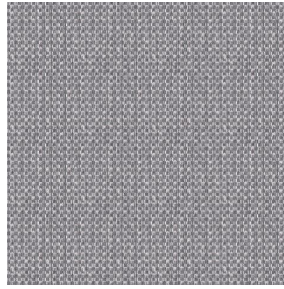
RIVE Océan 91



RIVE Turquoise 53



RIVE Sable 67



RIVE Gris 97



(Headquarters) SOTEXPRO - 510 route de Montchal - 42360 PANISSIÈRES - FRANCE - +33 4 77 27 60 60
(Showroom) Le LAB' SOTEXPRO - 4 rue du Mail - 75002 PARIS - FRANCE

Non-contractual photos and colors - Indicative fitting - Fitting may vary depending on support selected