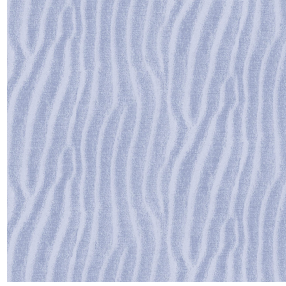




**NOCTEA BPI 00**  
Printing support



**SABLE Jasmin 74**  
Print pattern



## Printing support **NOCTEA BPI 00** Print pattern **SABLE Jasmin 74**

This fabric is used as a print medium.

### Technical properties



Flame retardant

**Applications** Roman blinds - Roller blinds - Panel curtains - Lining - Curtains

**Composition** 100% polyester with white flocked acrylic backing

**Weight** 310 g/m<sup>2</sup>

**Width** 280 cm

**Fabric direction** Room High Direction

**Fitting** ↔ 0.0 cm ↓ 0.0 cm

**Maintenance advice**

**Label**

**Minimum order** 25 linear(s) meter(s)



Visual not taking into account the printing medium, the final rendering may vary according to the chosen medium.

## Technical characteristics

Flame retardant	M1 / BS 5867 TYPE C / B1 / IMO PASS	
Optical index	Light reflexion :	71 %
	Light absorption :	29 %
	Light transmission :	0 %
Thermal index	Solar reflexion :	66 %
	Solar absorption :	34 %
	Solar transmission :	0 %
	UV transmission :	0 %
	Gtot :	Gt 35 % Fc 60 %
	Resilience	Lightfastness (units Class/8)
Dimensional Stability (%)		
Warp		-0,5
Weft		0
Breaking Elongation		
Warp		19
Weft		22
Breaking load (daN)		
Warp		37
Weft	57	

## Print pattern SABLE



SABLE Lin 11



SABLE Rose 129



SABLE Sable 67



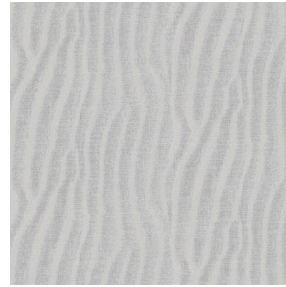
SABLE Absinthe 132



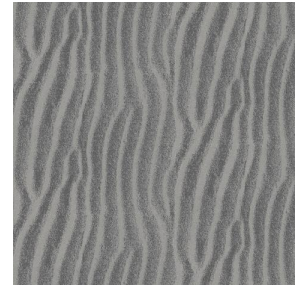
SABLE Ivoire 115



SABLE Noir 10



SABLE Souris 31



SABLE Gris 97



(Headquarters) SOTEXPRO - 510 route de Montchal - 42360 PANISSIÈRES - FRANCE - +33 4 77 27 60 60  
(Showroom) Le LAB' SOTEXPRO - 4 rue du Mail - 75002 PARIS - FRANCE

Non-contractual photos and colors - Indicative fitting - Fitting may vary depending on support selected