



NOCTWIN BPI 00
Printing support



SALIN Vert 24
Print pattern



Printing support **NOCTWIN BPI 00** Print pattern **SALIN Vert 24**

Support occultant pour impression, imprimable des 2 côtés.

Technical properties



Flame retardant

Applications Roman blinds - Panel curtains - Curtains

Composition Polyester/acrylique envers floqué

Weight 300 g/m²

Width 280 cm

Fabric direction Room High Direction

Fitting ↔ 0.0 cm ↓ 0.0 cm

Maintenance advice     

Label

Minimum order 25 linear(s) meter(s)



Visual not taking into account the printing medium, the final rendering may vary according to the chosen medium.

Technical characteristics

Flame retardant

B1 / IMO PASS

Resilience

Lightfastness (units Class/8)	6
Dimensional Stability (%)	
Warp	-1
Weft	0
Breaking Elongation	
Warp	31
Weft	8
Breaking load (daN)	
Warp	120
Weft	43

Print pattern SALIN



SALIN Abricot 08



SALIN Anis 62



SALIN Fuchsia 33



SALIN Naturel 26



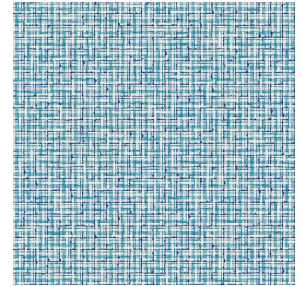
SALIN Océan 91



SALIN Orange 15



SALIN Rouge 21



SALIN Turquoise 53



(Headquarters) SOTEXPRO - 510 route de Montchal - 42360 PANISSIÈRES - FRANCE - +33 4 77 27 60 60
(Showroom) Le LAB' SOTEXPRO - 4 rue du Mail - 75002 PARIS - FRANCE

Non-contractual photos and colors - Indicative fitting - Fitting may vary depending on support selected