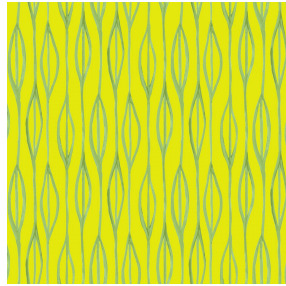




**NOCTWIN BPI 00**  
Printing support



**YENDI Anis 62**  
Print pattern



# Printing support **NOCTWIN BPI 00** Print pattern **YENDI Anis 62**

Support occultant pour impression, imprimable des 2 côtés.

## Technical properties



Flame retardant

**Applications** Roman blinds - Panel curtains - Curtains

**Composition** Polyester/acrylique envers floqué

**Weight** 300 g/m<sup>2</sup>

**Width** 280 cm

**Fabric direction** Room High Direction

**Fitting** ↔ 24.0 cm ↓ 20.0 cm

**Maintenance advice**     

**Label**

**Minimum order** 25 linear(s) meter(s)



Visual not taking into account the printing medium, the final rendering may vary according to the chosen medium.

## Technical characteristics

Flame retardant

B1 / IMO PASS

Resilience

Lightfastness (units Class/8)	6
Dimensional Stability (%)	
Warp	-1
Weft	0
Breaking Elongation	
Warp	31
Weft	8
Breaking load (daN)	
Warp	120
Weft	43

# Print pattern YENDI



YENDI Lagon 110



YENDI Lilas 19



YENDI Opéra 104



YENDI Pacifique 54



YENDI Sapin 126



YENDI Sanguine 05



YENDI Soleil 127



YENDI Terre 107



(Headquarters) SOTEXPRO - 510 route de Montchal - 42360 PANISSIÈRES - FRANCE - +33 4 77 27 60 60  
(Showroom) Le LAB' SOTEXPRO - 4 rue du Mail - 75002 PARIS - FRANCE

Non-contractual photos and colors - Indicative fitting - Fitting may vary depending on support selected