



**NOCTWIN BPI 00**  
Printing support



**MURA GREMAT 56**  
Print pattern

## Printing support **NOCTWIN BPI 00** Print pattern **MURA GREMAT 56**

Support occultant pour impression, imprimable des 2 côtés.

### Technical properties



Flame retardant

**Applications** Roman blinds - Panel curtains - Curtains

**Composition** Polyester/acrylique envers floqué

**Weight** 300 g/m<sup>2</sup>

**Width** 280 cm

**Fabric direction** Room High Direction

**Fitting** ↔ 13.0 cm ↓ 13.0 cm

**Maintenance advice**     

**Label**

**Minimum order** 25 linear(s) meter(s)



Visual not taking into account the printing medium, the final rendering may vary according to the chosen medium.

## Technical characteristics

Flame retardant

B1 / IMO PASS

Resilience

Lightfastness (units Class/8)	<b>6</b>
Dimensional Stability (%)	
Warp	<b>-1</b>
Weft	<b>0</b>
Breaking Elongation	
Warp	<b>31</b>
Weft	<b>8</b>
Breaking load (daN)	
Warp	<b>120</b>
Weft	<b>43</b>

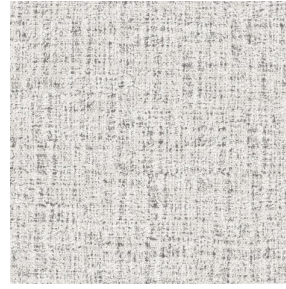
# Print pattern MURA



MURA NOIR 10



MURA GLACIER 43



MURA MASTIC 48



MURA OLIVE 61



MURA SAPHIR 106



MURA TERRE 107



MURA ROSE 129



MURA MINERAL 157



MURA DUNE 170



MURA ETAIN 180



MURA SAVANE 185



(Headquarters) SOTEXPRO - 510 route de Montchal - 42360 PANISSIÈRES - FRANCE - +33 4 77 27 60 60  
(Showroom) Le LAB' SOTEXPRO - 4 rue du Mail - 75002 PARIS - FRANCE

*Non-contractual photos and colors - Indicative fitting - Fitting may vary depending on support selected*