



**NOCTWIN BPI 00**  
Printing support



**GONIDIE Souris 31**  
Print pattern



# Printing support **NOCTWIN BPI 00** Print pattern **GONIDIE Souris 31**

Support occultant pour impression, imprimable des 2 côtés.

## Technical properties



Flame retardant

**Applications** Roman blinds - Panel curtains - Curtains

**Composition** Polyester/acrylique envers floqué

**Weight** 300 g/m<sup>2</sup>

**Width** 280 cm

**Fabric direction** Room High Direction

**Fitting** ↔ 0.0 cm ↓ 0.0 cm

**Maintenance advice**     

**Label**

**Minimum order** 25 linear(s) meter(s)



Visual not taking into account the printing medium, the final rendering may vary according to the chosen medium.

## Technical characteristics

Flame retardant

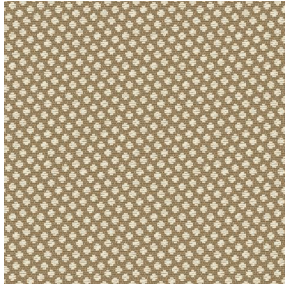
B1 / IMO PASS

Resilience

Lightfastness (units Class/8)	<b>6</b>
Dimensional Stability (%)	
Warp	<b>-1</b>
Weft	<b>0</b>
Breaking Elongation	
Warp	<b>31</b>
Weft	<b>8</b>
Breaking load (daN)	
Warp	<b>120</b>
Weft	<b>43</b>



# Print pattern GONIDIE



GONIDIE Beige 63



GONIDIE Citrouille 136



GONIDIE Glacier 43



GONIDIE Noir 10



GONIDIE Céladon 135



GONIDIE Anis 62



GONIDIE Perle 96



GONIDIE Mousse 92



GONIDIE Tourterelle  
138



GONIDIE Brique 42



GONIDIE Opéra 104



GONIDIE Pacifique 54



GONIDIE Brun 23



GONIDIE Crème 32



GONIDIE Taupe 95



GONIDIE Lin 11



GONIDIE Lierre 124



GONIDIE Bergamote  
121



GONIDIE Hortensia 134



GONIDIE Vieux rose 64



(Headquarters) SOTEXPRO - 510 route de Montchal - 42360 PANISSIÈRES - FRANCE - +33 4 77 27 60 60  
(Showroom) Le LAB' SOTEXPRO - 4 rue du Mail - 75002 PARIS - FRANCE

Non-contractual photos and colors - Indicative fitting - Fitting may vary depending on support selected



## Print pattern GONIDIE



GONIDIE Emeraude 88



GONIDIE Fuchsia 33



GONIDIE Ebene 113



GONIDIE Ficelle 09



(Headquarters) SOTEXPRO - 510 route de Montchal - 42360 PANISSIÈRES - FRANCE - +33 4 77 27 60 60  
(Showroom) Le LAB' SOTEXPRO - 4 rue du Mail - 75002 PARIS - FRANCE

Non-contractual photos and colors - Indicative fitting - Fitting may vary depending on support selected