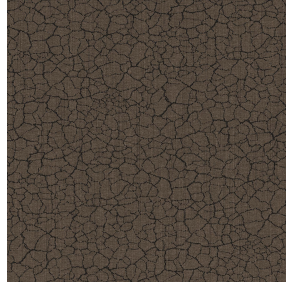




**NOCTWIN BPI 00**  
Printing support



**TERRA Brun 23**  
Print pattern



# Printing support **NOCTWIN BPI 00** Print pattern **TERRA Brun 23**

Support occultant pour impression, imprimable des 2 côtés.

## Technical properties



Flame retardant

**Applications** Roman blinds - Panel curtains - Curtains

**Composition** Polyester/acrylique envers floqué

**Weight** 300 g/m<sup>2</sup>

**Width** 280 cm

**Fabric direction** Room High Direction

**Fitting** ↔ 0.0 cm ↓ 0.0 cm

**Maintenance advice**     

**Label**

**Minimum order** 25 linear(s) meter(s)



Visual not taking into account the printing medium, the final rendering may vary according to the chosen medium.

## Technical characteristics

Flame retardant

B1 / IMO PASS

Resilience

Lightfastness (units Class/8)	6
Dimensional Stability (%)	
Warp	-1
Weft	0
Breaking Elongation	
Warp	31
Weft	8
Breaking load (daN)	
Warp	120
Weft	43

# Print pattern TERRA



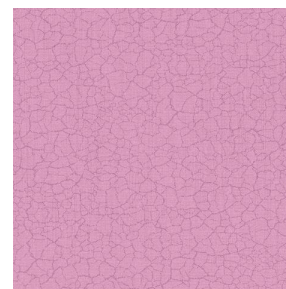
TERRA Ficelle 09



TERRA Taupe 95



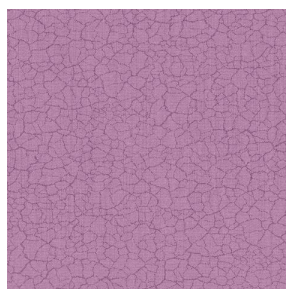
TERRA Ecume 82



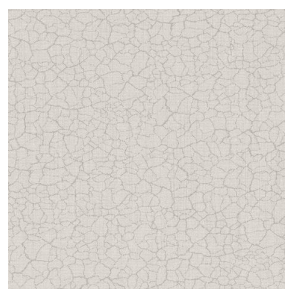
TERRA Rose 129



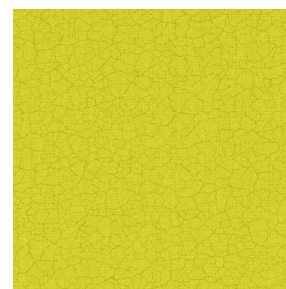
TERRA Fusain 71



TERRA Hortensia 134



TERRA Naturel 26



TERRA Anis 62



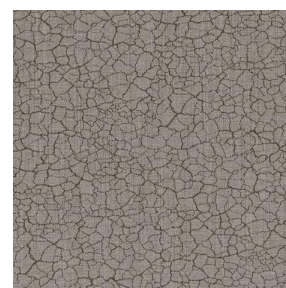
TERRA Lagon 110



TERRA Citrouille 136



TERRA Pacifique 54



TERRA Chamois 111



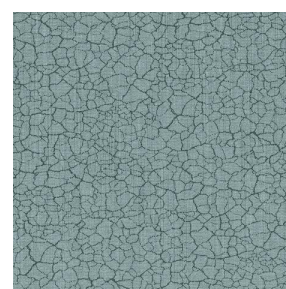
TERRA Titanium 98



TERRA Graphite 77



TERRA Gris 97



TERRA Ardoise 87



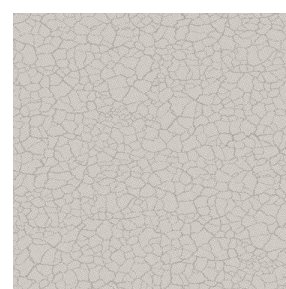
TERRA Violine 105



TERRA Chanvre 72



TERRA Argile 85



TERRA Lin 11



(Headquarters) SOTEXPRO - 510 route de Montchal - 42360 PANISSIÈRES - FRANCE - +33 4 77 27 60 60  
(Showroom) Le LAB' SOTEXPRO - 4 rue du Mail - 75002 PARIS - FRANCE

Non-contractual photos and colors - Indicative fitting - Fitting may vary depending on support selected

## Print pattern TERRA



TERRA Genêt 06



TERRA Céladon 135



TERRA Ebène 113



TERRA Ocre 03



(Headquarters) SOTEXPRO - 510 route de Montchal - 42360 PANISSIÈRES - FRANCE - +33 4 77 27 60 60  
(Showroom) Le LAB' SOTEXPRO - 4 rue du Mail - 75002 PARIS - FRANCE

*Non-contractual photos and colors - Indicative fitting - Fitting may vary depending on support selected*