



**NOCTWIN BPI 00**  
Printing support



**SABLE Sable 67**  
Print pattern



# Printing support **NOCTWIN BPI 00** Print pattern **SABLE Sable 67**

Support occultant pour impression, imprimable des 2 côtés.

## Technical properties



Flame retardant

**Applications** Roman blinds - Panel curtains - Curtains

**Composition** Polyester/acrylique envers floqué

**Weight** 300 g/m<sup>2</sup>

**Width** 280 cm

**Fabric direction** Room High Direction

**Fitting** ↔ 0.0 cm ↓ 0.0 cm

**Maintenance advice**     

**Label**

**Minimum order** 25 linear(s) meter(s)



Visual not taking into account the printing medium, the final rendering may vary according to the chosen medium.

## Technical characteristics

Flame retardant

B1 / IMO PASS

Resilience

Lightfastness (units Class/8)	<b>6</b>
Dimensional Stability (%)	
Warp	<b>-1</b>
Weft	<b>0</b>
Breaking Elongation	
Warp	<b>31</b>
Weft	<b>8</b>
Breaking load (daN)	
Warp	<b>120</b>
Weft	<b>43</b>

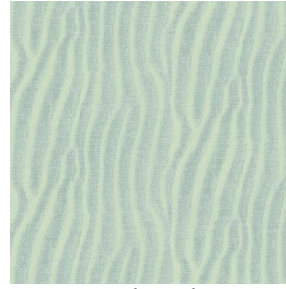
## Print pattern SABLE



SABLE Lin 11



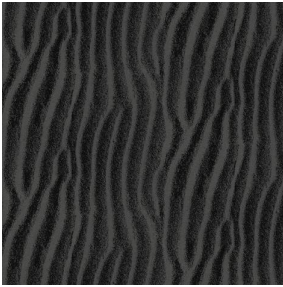
SABLE Rose 129



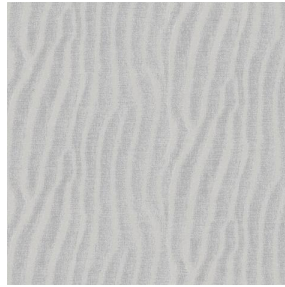
SABLE Absinthe 132



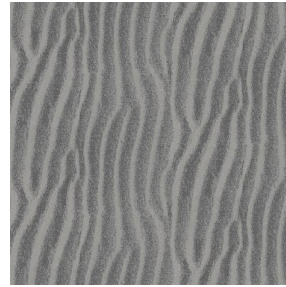
SABLE Ivoire 115



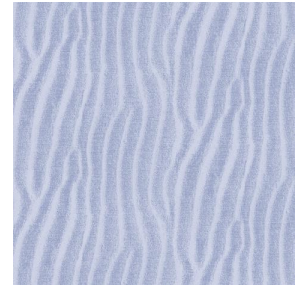
SABLE Noir 10



SABLE Souris 31



SABLE Gris 97



SABLE Jasmin 74



(Headquarters) SOTEXPRO - 510 route de Montchal - 42360 PANISSIÈRES - FRANCE - +33 4 77 27 60 60  
(Showroom) Le LAB' SOTEXPRO - 4 rue du Mail - 75002 PARIS - FRANCE

*Non-contractual photos and colors - Indicative fitting - Fitting may vary depending on support selected*