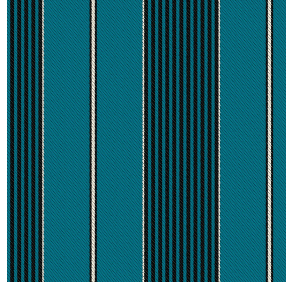




NOCTWIN BPI 00
Printing support



GUSTAVE Céladon 135
Print pattern



Visual not taking into account the printing medium, the final rendering may vary according to the chosen medium.

Printing support **NOCTWIN BPI 00** Print pattern **GUSTAVE Céladon 135**

Support occultant pour impression, imprimable des 2 côtés.

Technical properties



Flame retardant

Applications Roman blinds - Panel curtains - Curtains

Composition Polyester/acrylique envers floqué

Weight 300 g/m² 840 g/m²

Width 280 cm

Fabric direction Room High Direction

Fitting ↔ 14.0 cm ↓ 0.0 cm

Maintenance advice    

Label OEKO-TEX STANDARD 100

Minimum order 25 linear(s) meter(s)

Technical characteristics

Flame retardant

B1 / IMO PASS

Resilience

Lightfastness (units Class/8)

6

Dimensional Stability (%)

Warp

-1

Weft

0

Breaking Elongation

Warp

31

Weft

8

Breaking load (daN)

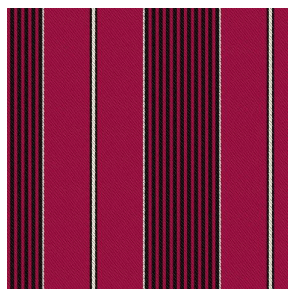
Warp

120

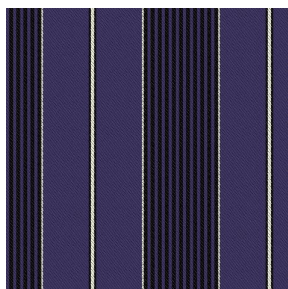
Weft

43

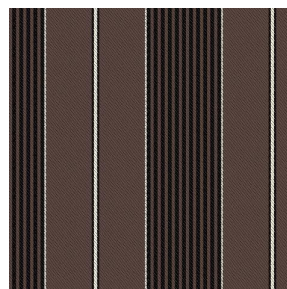
Print pattern GUSTAVE



GUSTAVE Rubis 59



GUSTAVE Prune 84



GUSTAVE Taupe 95



(Headquarters) SOTEXPRO - 510 route de Montchal - 42360 PANISSIÈRES - FRANCE - +33 4 77 27 60 60

Non-contractual photos and colors - Indicative fitting - Fitting may vary depending on support selected