



NORA Gris envers blanc 63
Printing support



SCOURTIN Ebene 113
Print pattern



Visual not taking into account the printing medium, the final rendering may vary according to the chosen medium.

Printing support **NORA Gris envers blanc 63**

Print pattern **SCOURTIN Ebene 113**

Support occultant pour impression, imprimable des 2 côtés dont un texturé.

Technical properties

Applications Roman blinds - Panel curtains - Curtains

Composition Polyester/acrylique

Weight 380 g/m²

Width 280 cm

Fabric direction Room High Direction

Fitting ↔ cm ↓ cm

Maintenance advice     

Label

Minimum order 25 linear(s) metter(s)

Technical characteristics

Resilience

Dimensional Stability (%)

Warp -0,5

Weft -0,5

Breaking Elongation

Warp 28

Weft 12

Breaking load (daN)

Warp 140

Weft 57

Print pattern SCOURTIN



SCOURTIN Beige 63



SCOURTIN Fuchsia 33



SCOURTIN Sapin 126



SCOURTIN Bergamote
121



SCOURTIN Anthracite
38



SCOURTIN Violine 105



SCOURTIN Pacifique 54



SCOURTIN Rose 129



SCOURTIN Blanc 01



SCOURTIN Lin 11



SCOURTIN Naturel 26



SCOURTIN Citrouille
136



SCOURTIN Turquoise 53



SCOURTIN Brun 23



SCOURTIN Hortensia
134



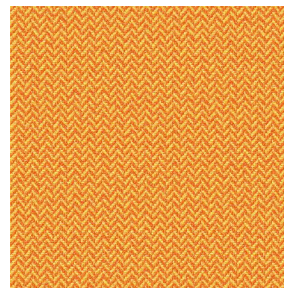
SCOURTIN Orage 123



SCOURTIN Rubis 59



SCOURTIN Ficelle 09



SCOURTIN Maïs 37



SCOURTIN Céladon 135



(Headquarters) SOTEXPRO - 510 route de Montchal - 42360 PANISSIÈRES - FRANCE - +33 4 77 27 60 60
(Showroom) Le LAB' SOTEXPRO - 4 rue du Mail - 75002 PARIS - FRANCE

Non-contractual photos and colors - Indicative fitting - Fitting may vary depending on support selected

Print pattern SCOURTIN



SCOURTIN Tourterelle
138



SCOURTIN Titanium 98



SCOURTIN Lagon 110



SCOURTIN Gris 97



(Headquarters) SOTEXPRO - 510 route de Montchal - 42360 PANISSIÈRES - FRANCE - +33 4 77 27 60 60
(Showroom) Le LAB' SOTEXPRO - 4 rue du Mail - 75002 PARIS - FRANCE

Non-contractual photos and colors - Indicative fitting - Fitting may vary depending on support selected