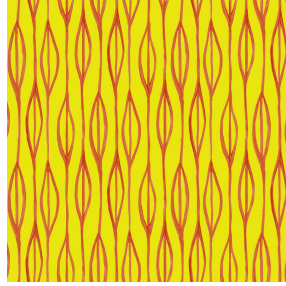




NOSUN BPI 00
Printing support



YENDI Soleil 127
Print pattern



Printing support **NOSUN BPI 00** Print pattern **YENDI Soleil 127**

Support pour impression effet natté reliéfé occultant grâce à son envers floqué acrylique blanc

Technical properties

Applications Roman blinds - Panel curtains - Curtains

Composition Polyester/acrylique

Weight 400 g/m²

Width 280 cm

Fabric direction Room High Direction

Fitting ↔ 24.0 cm ↓ 20.0 cm

Maintenance advice     

Label

Minimum order 25 linear(s) meter(s)



Visual not taking into account the printing medium, the final rendering may vary according to the chosen medium.

Technical characteristics

Resilience

Dimensional Stability (%)

Warp 0

Weft 0

Breaking Elongation

Warp 40

Weft 32

Breaking load (daN)

Warp 190

Weft 93

Print pattern YENDI



YENDI Anis 62



YENDI Lagon 110



YENDI Lilas 19



YENDI Opéra 104



YENDI Pacifique 54



YENDI Sapin 126



YENDI Sanguine 05



YENDI Terre 107



(Headquarters) SOTEXPRO - 510 route de Montchal - 42360 PANISSIÈRES - FRANCE - +33 4 77 27 60 60
(Showroom) Le LAB' SOTEXPRO - 4 rue du Mail - 75002 PARIS - FRANCE

Non-contractual photos and colors - Indicative fitting - Fitting may vary depending on support selected