



NOSUN BPI 00  
Printing support



ANATOLE Taupe 95  
Print pattern



## Printing support **NOSUN BPI 00** Print pattern **ANATOLE Taupe 95**

Support pour impression effet natté reliéé occultant grâce à son envers floqué acrylique blanc

### Technical properties

**Applications** Roman blinds - Panel curtains - Curtains

**Composition** Polyester/acrylique

**Weight** 400 g/m<sup>2</sup>

**Width** 280 cm

**Fabric direction** Room High Direction

**Fitting** ↔ cm ↓ cm

**Maintenance advice**     

**Label**

**Minimum order** 25 linear(s) meter(s)



Visual not taking into account the printing medium, the final rendering may vary according to the chosen medium.

## Technical characteristics

Resilience

Dimensional Stability (%)

Warp 0

Weft 0

Breaking Elongation

Warp 40

Weft 32

Breaking load (daN)

Warp 190

Weft 93

# Print pattern ANATOLE



ANATOLE Naturel 26



ANATOLE lin 11



ANATOLE Ficelle 09



ANATOLE Celadon 135



ANATOLE Océan 91



ANATOLE Titanium 98



ANATOLE Cactus 36



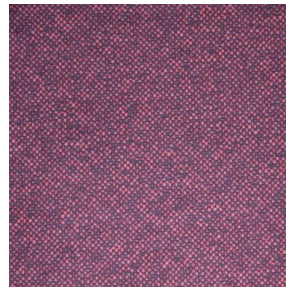
ANATOLE mousse 92



ANATOLE Or 94



ANATOLE Chaudron  
118



ANATOLE Amarante  
108



(Headquarters) SOTEXPRO - 510 route de Montchal - 42360 PANISSIÈRES - FRANCE - +33 4 77 27 60 60  
(Showroom) Le LAB' SOTEXPRO - 4 rue du Mail - 75002 PARIS - FRANCE

Non-contractual photos and colors - Indicative fitting - Fitting may vary depending on support selected