



**NOSUN BPI 00**  
Printing support



**ODE Lilas 19**  
Print pattern



Visual not taking into account the printing medium, the final rendering may vary according to the chosen medium.

## Printing support **NOSUN BPI 00** Print pattern **ODE Lilas 19**

Support pour impression effet natté reliéé occultant grâce à son envers floqué acrylique blanc

### Technical properties

**Applications** Roman blinds - Panel curtains - Curtains






**Composition** Polyester/acrylique

**Weight** 400 g/m<sup>2</sup>

**Width** 280 cm

**Fabric direction** Room High Direction

**Fitting** ↔ 50.0 cm ↓ 50.0 cm

**Maintenance advice**     

**Label**

**Minimum order** 25 linear(s) meter(s)

## Technical characteristics

Resilience

Dimensional Stability (%)

Warp 0

Weft 0

Breaking Elongation

Warp 40

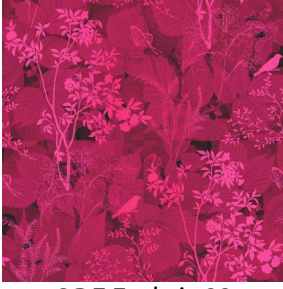
Weft 32

Breaking load (daN)

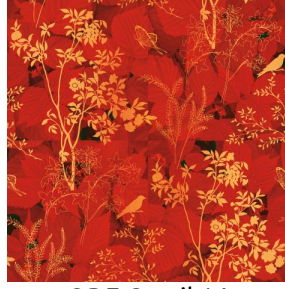
Warp 190

Weft 93

## Print pattern ODE



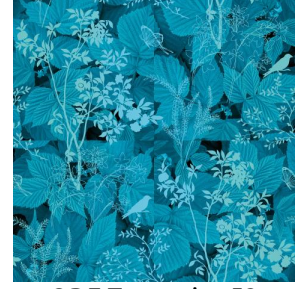
ODE Fuchsia 33



ODE Corail 14



ODE Bleu 41



ODE Turquoise 53



(Headquarters) SOTEXPRO - 510 route de Montchal - 42360 PANISSIÈRES - FRANCE - +33 4 77 27 60 60  
(Showroom) Le LAB' SOTEXPRO - 4 rue du Mail - 75002 PARIS - FRANCE

Non-contractual photos and colors - Indicative fitting - Fitting may vary depending on support selected