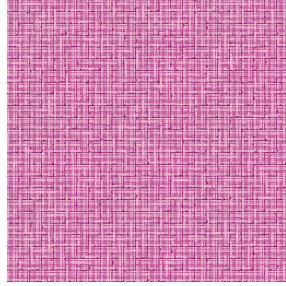




OPAQ BPI 00
Printing support



SALIN Fuchsia 33
Print pattern



Printing support **OPAQ BPI 00** Print pattern **SALIN Fuchsia 33**

Unclassified blackout print support

Technical properties

Applications Roman blinds - Panel curtains - Lining - Curtains

Composition 100% polyester with white flocked acrylic backing

Weight 280 g/m²

Width 280 cm

Fabric direction Room High Direction

Fitting ↔ 0.0 cm ↑ 0.0 cm

Maintenance advice     

Label

Minimum order 25 linear(s) meter(s)



Visual not taking into account the printing medium, the final rendering may vary according to the chosen medium.

Technical characteristics

Optical index

Light reflexion :	82 %
Light absorption :	18 %
Light transmission :	0 %

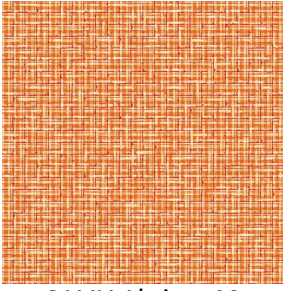
Thermal index

Solar reflexion :	74 %
Solar absorption :	26 %
Solar transmission :	0 %
UV transmission :	0 %
Gtot :	Gt 33 % Fc 55 %

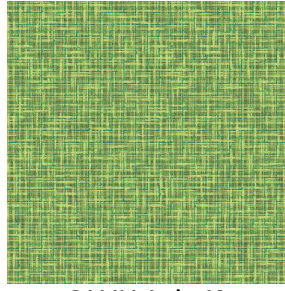
Resilience

Lightfastness (units Class/8)	5
Dimensional Stability (%)	
Warp	-0,5
Weft	0
Breaking Elongation	
Warp	26
Weft	15
Breaking load (daN)	
Warp	62
Weft	31

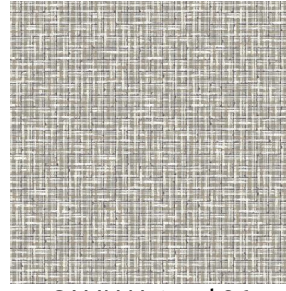
Print pattern SALIN



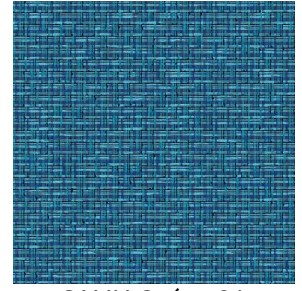
SALIN Abricot 08



SALIN Anis 62



SALIN Naturel 26



SALIN Océan 91



SALIN Orange 15



SALIN Rouge 21



SALIN Turquoise 53



SALIN Vert 24



(Headquarters) SOTEXPRO - 510 route de Montchal - 42360 PANISSIÈRES - FRANCE - +33 4 77 27 60 60
(Showroom) Le LAB' SOTEXPRO - 4 rue du Mail - 75002 PARIS - FRANCE

Non-contractual photos and colors - Indicative fitting - Fitting may vary depending on support selected