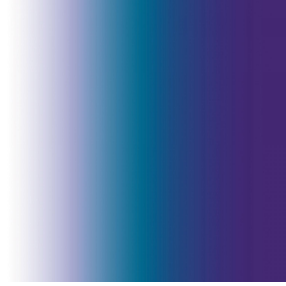




OPAQ BPI 00
Printing support



ZENITH Bleu 41
Print pattern



Printing support **OPAQ BPI 00** Print pattern **ZENITH Bleu 41**

Unclassified blackout print support

Technical properties

Applications Roman blinds - Panel curtains - Lining - Curtains

Composition 100% polyester with white flocked acrylic backing

Weight 280 g/m²

Width 280 cm

Fabric direction Room High Direction

Fitting ↔ 280.0 cm ↓ 50.0 cm

Maintenance advice     

Label

Minimum order 25 linear(s) meter(s)



Visual not taking into account the printing medium, the final rendering may vary according to the chosen medium.

Technical characteristics

Optical index

| | |
|----------------------|-------------|
| Light reflexion : | 82 % |
| Light absorption : | 18 % |
| Light transmission : | 0 % |

Thermal index

| | |
|----------------------|------------------------|
| Solar reflexion : | 74 % |
| Solar absorption : | 26 % |
| Solar transmission : | 0 % |
| UV transmission : | 0 % |
| Gtot : | Gt 33 % Fc 55 % |

Resilience

| | |
|-------------------------------|-------------|
| Lightfastness (units Class/8) | 5 |
| Dimensional Stability (%) | |
| Warp | -0,5 |
| Weft | 0 |
| Breaking Elongation | |
| Warp | 26 |
| Weft | 15 |
| Breaking load (daN) | |
| Warp | 62 |
| Weft | 31 |

Print pattern ZENITH



ZENITH Agrume 69



ZENITH Anis 62



ZENITH Cactus 36



ZENITH Pivoine 57



(Headquarters) SOTEXPRO - 510 route de Montchal - 42360 PANISSIÈRES - FRANCE - +33 4 77 27 60 60
(Showroom) Le LAB' SOTEXPRO - 4 rue du Mail - 75002 PARIS - FRANCE

Non-contractual photos and colors - Indicative fitting - Fitting may vary depending on support selected