



**OPAQ BPI 00**  
Printing support








**CHARLOTTE Anis 62**  
Print pattern




# Printing support **OPAQ BPI 00** Print pattern **CHARLOTTE Anis 62**

Unclassified blackout print support

## Technical properties

- Applications** Lining - Curtains - Roman blinds - Panel curtains
- Composition** 100% polyester with white flocked acrylic backing
- Weight** 280 g/m<sup>2</sup>
- Width** 280 cm
- Fabric direction** Room High Direction
- Fitting** ↔ 0.0 cm ↑ 0.0 cm
- Maintenance advice**     
- Label**
- Minimum order** 25 linear(s) meter(s)

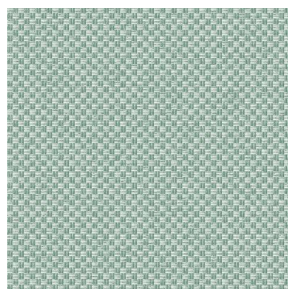
 Visual not taking into account the printing medium, the final rendering may vary according to the chosen medium.

## Technical characteristics

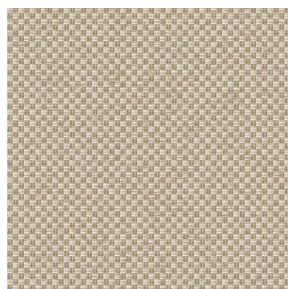
Optical index	Light reflexion :	82 %
	Light absorption :	18 %
	Light transmission :	0 %
Thermal index	Solar reflexion :	74 %
	Solar absorption :	26 %
	Solar transmission :	0 %
	UV transmission :	0 %
	Gtot :	Gt 33 % Fc 55 %
Resilience	Lightfastness (units Class/8)	5
	Dimentional Stability (%)	
	Warp	-0,5
	Weft	0
	Breaking Elongation	
	Warp	26
	Weft	15
	Breaking load (daN)	
	Warp	62
	Weft	31



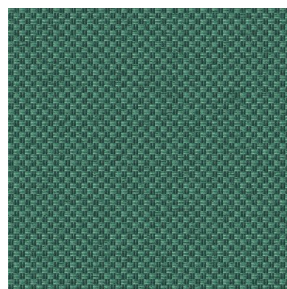
## Print pattern CHARLOTTE



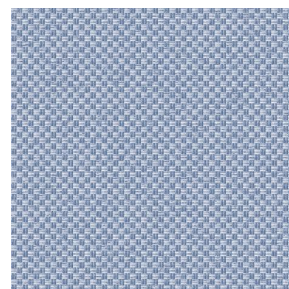
CHARLOTTE Absinthe  
132



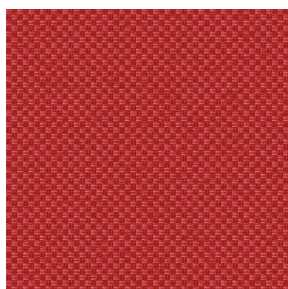
CHARLOTTE Beige 63



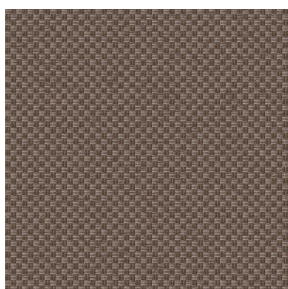
CHARLOTTE Bouteille  
101



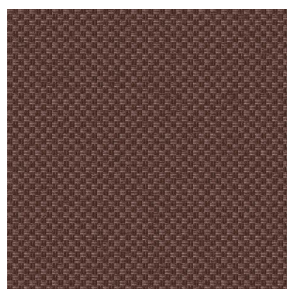
CHARLOTTE Brume 47



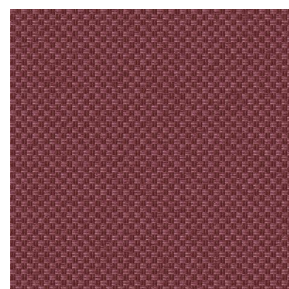
CHARLOTTE Cerise 66



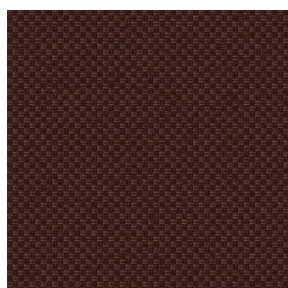
CHARLOTTE Chamois  
111



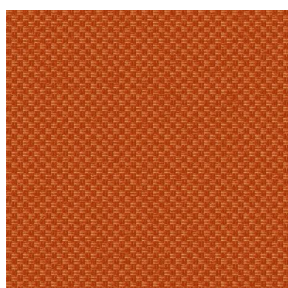
CHARLOTTE Chataigne  
55



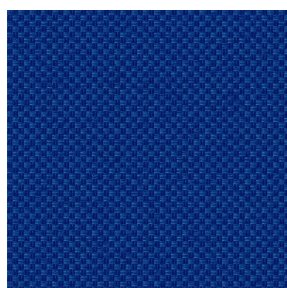
CHARLOTTE Chaudron  
118



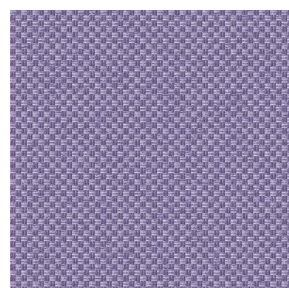
CHARLOTTE Chocolat  
70



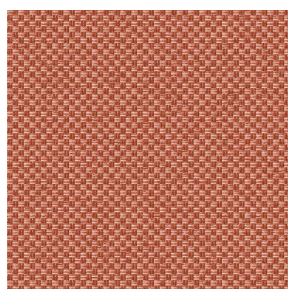
CHARLOTTE Citrouille  
136



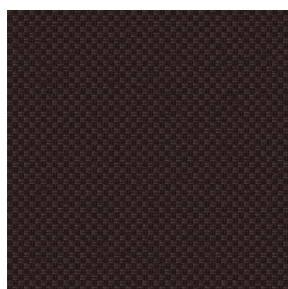
CHARLOTTE Cobalt 114



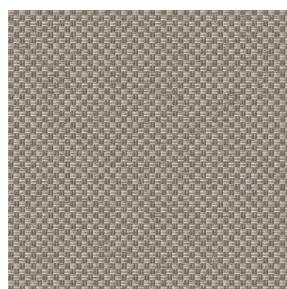
CHARLOTTE Crepuscule  
45



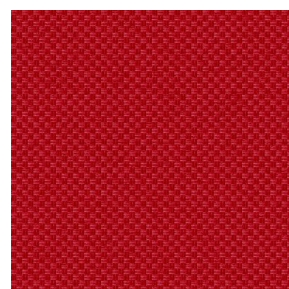
CHARLOTTE Cuivre 50



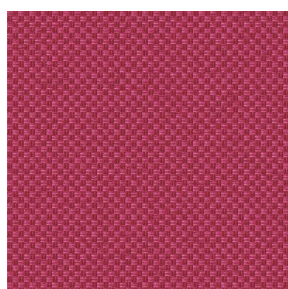
CHARLOTTE Ebene 124



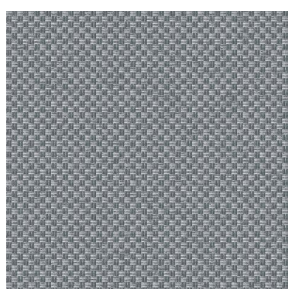
CHARLOTTE Ficelle 09



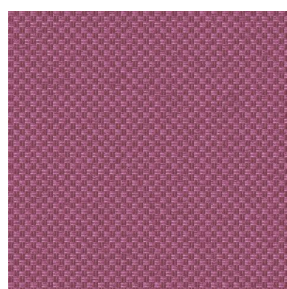
CHARLOTTE Fiesta 131



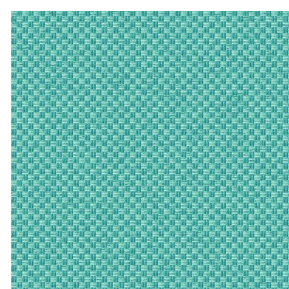
CHARLOTTE Grenat 56



CHARLOTTE Gris 97



CHARLOTTE Hortensia  
134



CHARLOTTE Lagon 110

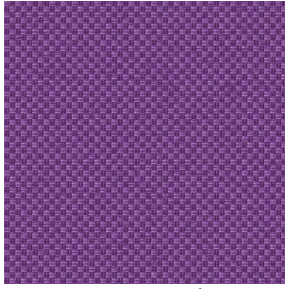


(Headquarters) SOTEXPRO - 510 route de Montchal - 42360 PANISSIÈRES - FRANCE - +33 4 77 27 60 60  
(Showroom) Le LAB' SOTEXPRO - 4 rue du Mail - 75002 PARIS - FRANCE

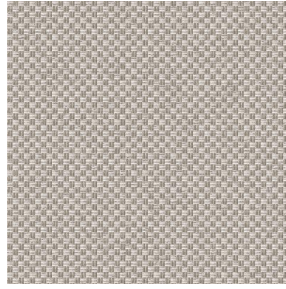
Non-contractual photos and colors - Indicative fitting - Fitting may vary depending on support selected



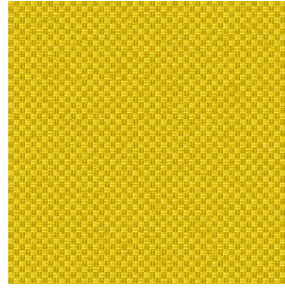
## Print pattern CHARLOTTE



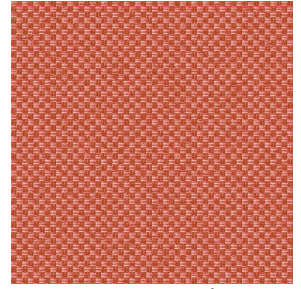
CHARLOTTE Lilas 19



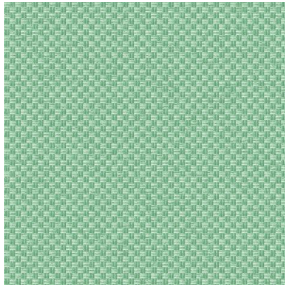
CHARLOTTE Lin 11



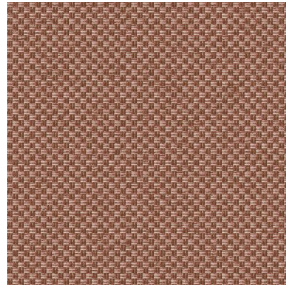
CHARLOTTE Maïs 37



CHARLOTTE Melon 22



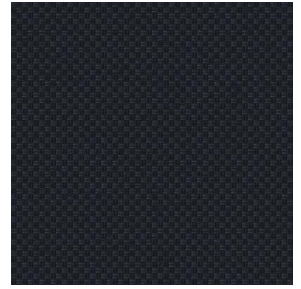
CHARLOTTE Menthe  
122



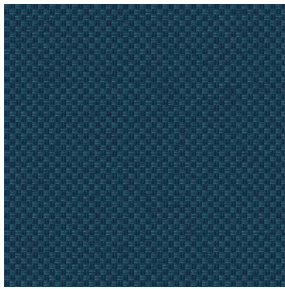
CHARLOTTE Mordore  
133



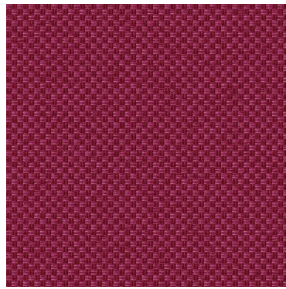
CHARLOTTE Mousse 92



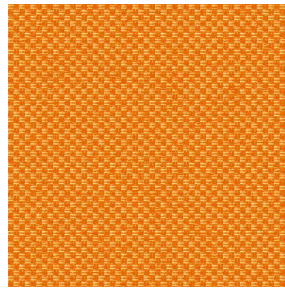
CHARLOTTE Noir 10



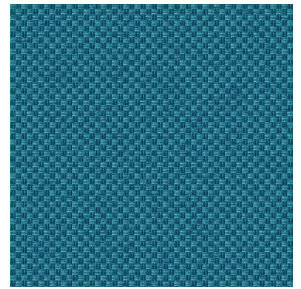
CHARLOTTE Océan 91



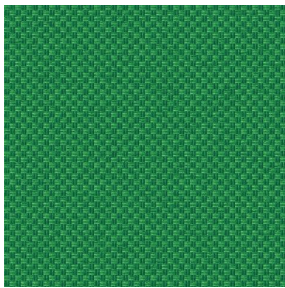
CHARLOTTE Opéra 104



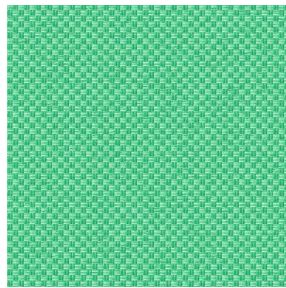
CHARLOTTE Orange 15



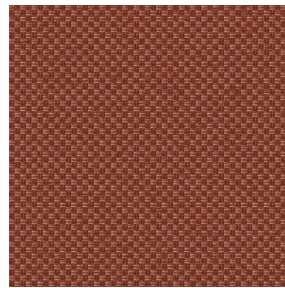
CHARLOTTE Pacifique  
54



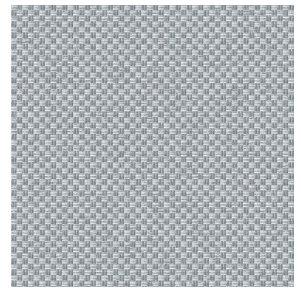
CHARLOTTE Prairie 125



CHARLOTTE Printemps  
130



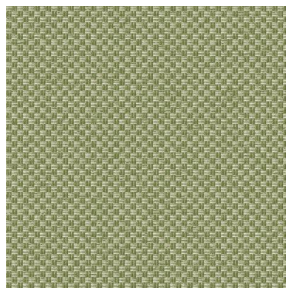
CHARLOTTE Sienne 29



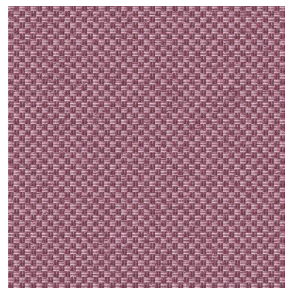
CHARLOTTE Souris 31



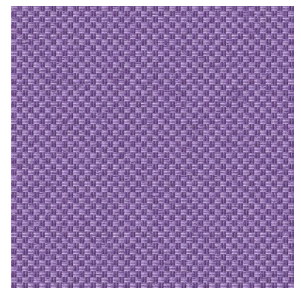
CHARLOTTE Terre 107



CHARLOTTE Tilleul 103



CHARLOTTE Vieux rose  
64



CHARLOTTE Violine 105



(Headquarters) SOTEXPRO - 510 route de Montchal - 42360 PANISSIÈRES - FRANCE - +33 4 77 27 60 60  
(Showroom) Le LAB' SOTEXPRO - 4 rue du Mail - 75002 PARIS - FRANCE

Non-contractual photos and colors - Indicative fitting - Fitting may vary depending on support selected