



**OPAQ BPI 00**  
Printing support



**ANATOLE Naturel 26**  
Print pattern



## Printing support **OPAQ BPI 00** Print pattern **ANATOLE Naturel 26**

Unclassified blackout print support

### Technical properties

**Applications** Roman blinds - Panel curtains - Lining - Curtains

**Composition** 100% polyester with white flocked acrylic backing

**Weight** 280 g/m<sup>2</sup>

**Width** 280 cm

**Fabric direction** Room High Direction

**Fitting** ↔ cm ↓ cm

**Maintenance advice**     

**Label**

**Minimum order** 25 linear(s) meter(s)



Visual not taking into account the printing medium, the final rendering may vary according to the chosen medium.

## Technical characteristics

### Optical index

Light reflexion :	<b>82 %</b>
Light absorption :	<b>18 %</b>
Light transmission :	<b>0 %</b>

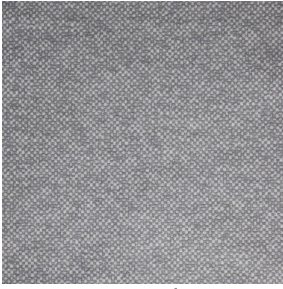
### Thermal index

Solar reflexion :	<b>74 %</b>
Solar absorption :	<b>26 %</b>
Solar transmission :	<b>0 %</b>
UV transmission :	<b>0 %</b>
Gtot :	<b>Gt 33 % Fc 55 %</b>

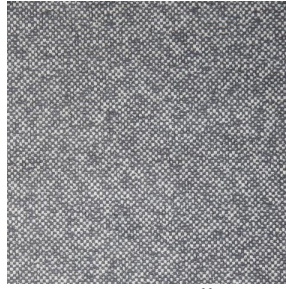
### Resilience

Lightfastness (units Class/8)	<b>5</b>
Dimensional Stability (%)	
Warp	<b>-0,5</b>
Weft	<b>0</b>
Breaking Elongation	
Warp	<b>26</b>
Weft	<b>15</b>
Breaking load (daN)	
Warp	<b>62</b>
Weft	<b>31</b>

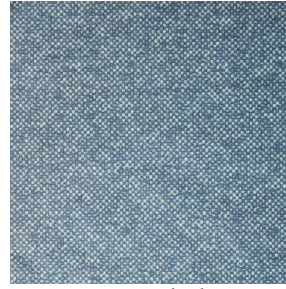
# Print pattern ANATOLE



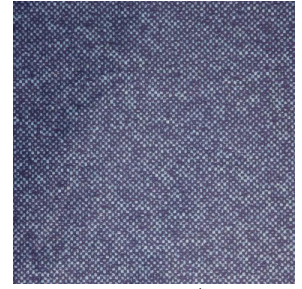
ANATOLE lin 11



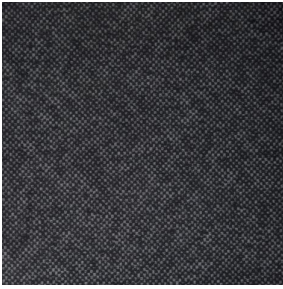
ANATOLE Ficelle 09



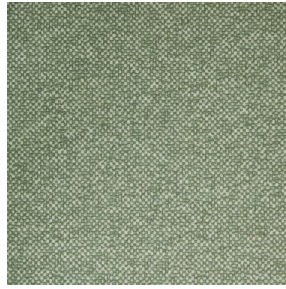
ANATOLE Celadon 135



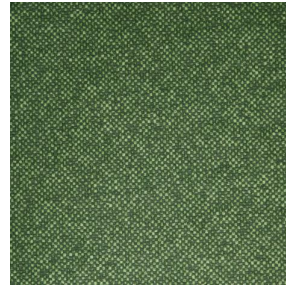
ANATOLE Océan 91



ANATOLE Titanium 98



ANATOLE Cactus 36



ANATOLE mousse 92



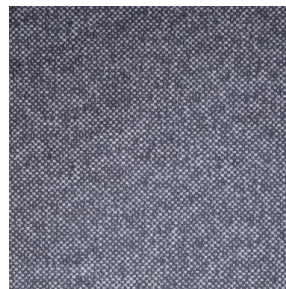
ANATOLE Or 94



ANATOLE Chaudron  
118



ANATOLE Amarante  
108



ANATOLE Taupe 95



(Headquarters) SOTEXPRO - 510 route de Montchal - 42360 PANISSIÈRES - FRANCE - +33 4 77 27 60 60  
(Showroom) Le LAB' SOTEXPRO - 4 rue du Mail - 75002 PARIS - FRANCE

*Non-contractual photos and colors - Indicative fitting - Fitting may vary depending on support selected*