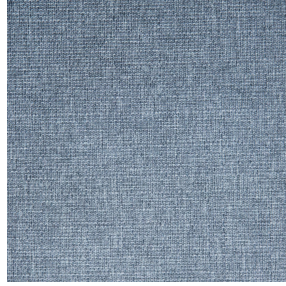




**OPAQ BPI 00**  
Printing support



**MUNA Tourterelle 138**  
Print pattern



## Printing support **OPAQ BPI 00** Print pattern **MUNA Tourterelle 138**

Unclassified blackout print support

### Technical properties

**Applications** Roman blinds - Panel curtains - Lining - Curtains

**Composition** 100% polyester with white flocked acrylic backing

**Weight** 280 g/m<sup>2</sup>

**Width** 280 cm

**Fabric direction** Room High Direction

**Fitting** ↔ cm ↓ cm

**Maintenance advice**     

**Label**

**Minimum order** 25 linear(s) meter(s)



Visual not taking into account the printing medium, the final rendering may vary according to the chosen medium.

## Technical characteristics

|                     |                               |                        |
|---------------------|-------------------------------|------------------------|
| Optical index       | Light reflexion :             | <b>82 %</b>            |
|                     | Light absorption :            | <b>18 %</b>            |
|                     | Light transmission :          | <b>0 %</b>             |
| Thermal index       | Solar reflexion :             | <b>74 %</b>            |
|                     | Solar absorption :            | <b>26 %</b>            |
|                     | Solar transmission :          | <b>0 %</b>             |
|                     | UV transmission :             | <b>0 %</b>             |
|                     | Gtot :                        | <b>Gt 33 % Fc 55 %</b> |
| Resilience          | Lightfastness (units Class/8) | <b>5</b>               |
|                     | Dimensional Stability (%)     |                        |
|                     | Warp                          | <b>-0,5</b>            |
|                     | Weft                          | <b>0</b>               |
|                     | Breaking Elongation           |                        |
|                     | Warp                          | <b>26</b>              |
|                     | Weft                          | <b>15</b>              |
| Breaking load (daN) |                               |                        |
| Warp                | <b>62</b>                     |                        |
| Weft                | <b>31</b>                     |                        |

# Print pattern MUNA



MUNA Cactus 36



MUNA soleil 90



MUNA gris 97



MUNA lin 11



MUNA Melon 22



MUNA souris 31



MUNA lagon 110



MUNA jade 116



MUNA terre 107



MUNA céladon 135



MUNA Coco 142



MUNA Sable 67



MUNA Saumon 143



MUNA Sisal 140



MUNA Ardoise 87



MUNA Tilleul 103



MUNA Chanvre 72



MUNA Graphite 77



MUNA Olive 61



MUNA Lierre 124



(Headquarters) SOTEXPRO - 510 route de Montchal - 42360 PANISSIÈRES - FRANCE - +33 4 77 27 60 60  
(Showroom) Le LAB' SOTEXPRO - 4 rue du Mail - 75002 PARIS - FRANCE

Non-contractual photos and colors - Indicative fitting - Fitting may vary depending on support selected

# Print pattern MUNA



MUNA Indigo 144



MUNA Sienne 29



MUNA Rouge 21



MUNA Saphir 106



MUNA Violine 105



MUNA Titanium 98



MUNA Acier 18



(Headquarters) SOTEXPRO - 510 route de Montchal - 42360 PANISSIÈRES - FRANCE - +33 4 77 27 60 60  
(Showroom) Le LAB' SOTEXPRO - 4 rue du Mail - 75002 PARIS - FRANCE

Non-contractual photos and colors - Indicative fitting - Fitting may vary depending on support selected