



OPAQ BPI 00
Printing support



CARRARA Céladon 135
Print pattern



Visual not taking into account the printing medium, the final rendering may vary according to the chosen medium.

Printing support **OPAQ BPI 00** Print pattern **CARRARA Céladon 135**

Unclassified blackout print support

Technical properties

Applications Roman blinds - Panel curtains - Lining - Curtains

Composition 100% polyester with white flocked acrylic backing

Weight 280 g/m²

Width 280 cm

Fabric direction Room High Direction

Fitting ↔ 0.0 cm ↑ 0.0 cm

Maintenance advice     

Label

Minimum order 25 linear(s) meter(s)

Technical characteristics

Optical index

Light reflexion :	82 %
Light absorption :	18 %
Light transmission :	0 %

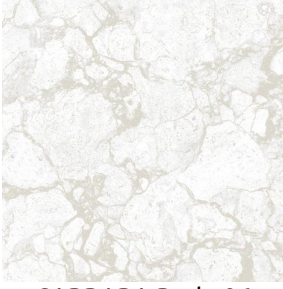
Thermal index

Solar reflexion :	74 %
Solar absorption :	26 %
Solar transmission :	0 %
UV transmission :	0 %
Gtot :	Gt 33 % Fc 55 %

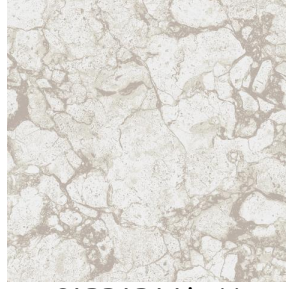
Resilience

Lightfastness (units Class/8)	5
Dimensional Stability (%)	
Warp	-0,5
Weft	0
Breaking Elongation	
Warp	26
Weft	15
Breaking load (daN)	
Warp	62
Weft	31

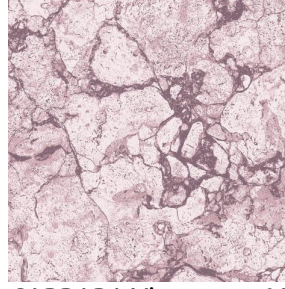
Print pattern CARRARA



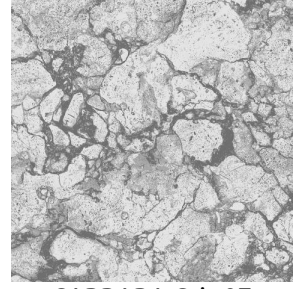
CARRARA Perle 96



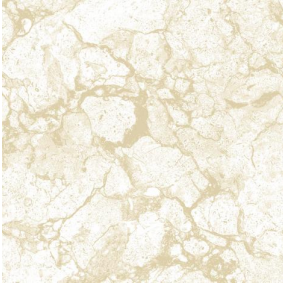
CARRARA Lin 11



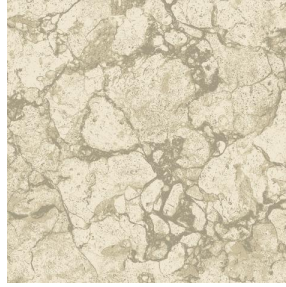
CARRARA Vieux rose 64



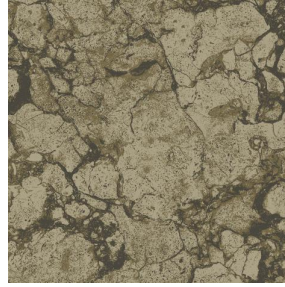
CARRARA Gris 97



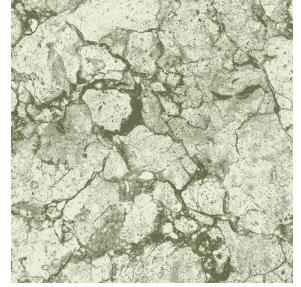
CARRARA Naturel 26



CARRARA Ficelle 09



CARRARA Chamois 111



CARRARA Absinthe 132



(Headquarters) SOTEXPRO - 510 route de Montchal - 42360 PANISSIÈRES - FRANCE - +33 4 77 27 60 60
(Showroom) Le LAB' SOTEXPRO - 4 rue du Mail - 75002 PARIS - FRANCE

Non-contractual photos and colors - Indicative fitting - Fitting may vary depending on support selected