



OPAQ BPI 00
Printing support



CARRARA Gris 97
Print pattern



Visual not taking into account the printing medium, the final rendering may vary according to the chosen medium.

Printing support **OPAQ BPI 00** Print pattern **CARRARA Gris 97**

Unclassified blackout print support

Technical properties

Applications Roman blinds - Panel curtains - Lining - Curtains

Composition 100% polyester with white flocked acrylic backing

Weight 280 g/m²

Width 280 cm

Fabric direction Room High Direction

Fitting ↔ 0.0 cm ↑ 0.0 cm

Maintenance advice     

Label

Minimum order 25 linear(s) meter(s)

Technical characteristics

Optical index	Light reflexion :	82 %
	Light absorption :	18 %
	Light transmission :	0 %
Thermal index	Solar reflexion :	74 %
	Solar absorption :	26 %
	Solar transmission :	0 %
	UV transmission :	0 %
	Gtot :	Gt 33 % Fc 55 %
Resilience	Lightfastness (units Class/8)	5
	Dimensional Stability (%)	
	Warp	-0,5
	Weft	0
	Breaking Elongation	
	Warp	26
	Weft	15
Breaking load (daN)		
Warp	62	
Weft	31	

Print pattern CARRARA



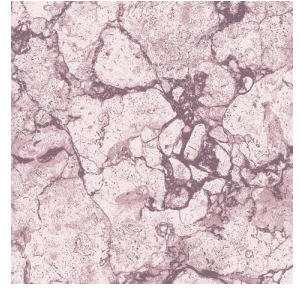
CARRARA Céladon 135



CARRARA Perle 96



CARRARA Lin 11



CARRARA Vieux rose 64



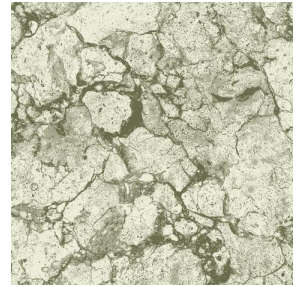
CARRARA Naturel 26



CARRARA Ficelle 09



CARRARA Chamois 111



CARRARA Absinthe 132



(Headquarters) SOTEXPRO - 510 route de Montchal - 42360 PANISSIÈRES - FRANCE - +33 4 77 27 60 60
(Showroom) Le LAB' SOTEXPRO - 4 rue du Mail - 75002 PARIS - FRANCE

Non-contractual photos and colors - Indicative fitting - Fitting may vary depending on support selected