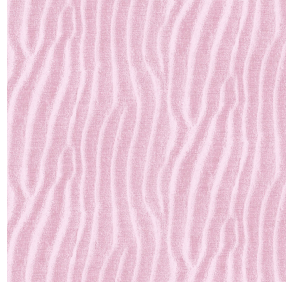




OPAQ BPI 00
Printing support



SABLE Rose 129
Print pattern



Printing support **OPAQ BPI 00** Print pattern **SABLE Rose 129**

Unclassified blackout print support

Technical properties

Applications Roman blinds - Panel curtains - Lining - Curtains


Composition 100% polyester with white flocked acrylic backing

Weight 280 g/m²

Width 280 cm

Fabric direction Room High Direction

Fitting ↔ 0.0 cm ↑ 0.0 cm

Maintenance advice     

Label

Minimum order 25 linear(s) meter(s)



Visual not taking into account the printing medium, the final rendering may vary according to the chosen medium.

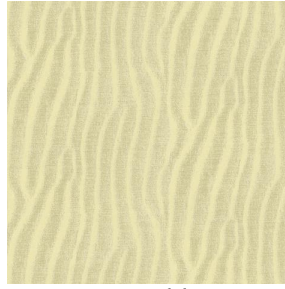
Technical characteristics

Optical index	Light reflexion :	82 %
	Light absorption :	18 %
	Light transmission :	0 %
Thermal index	Solar reflexion :	74 %
	Solar absorption :	26 %
	Solar transmission :	0 %
	UV transmission :	0 %
	Gtot :	Gt 33 % Fc 55 %
Resilience	Lightfastness (units Class/8)	5
	Dimensional Stability (%)	
	Warp	-0,5
	Weft	0
	Breaking Elongation	
	Warp	26
	Weft	15
	Breaking load (daN)	
Warp	62	
Weft	31	

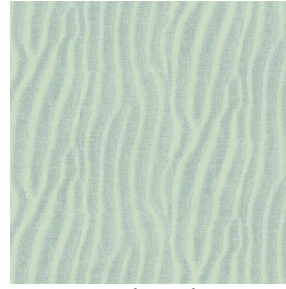
Print pattern SABLE



SABLE Lin 11



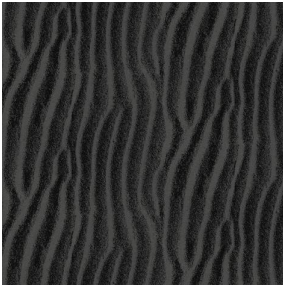
SABLE Sable 67



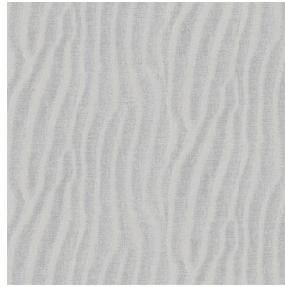
SABLE Absinthe 132



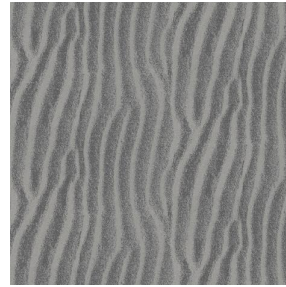
SABLE Ivoire 115



SABLE Noir 10



SABLE Souris 31



SABLE Gris 97



SABLE Jasmin 74



(Headquarters) SOTEXPRO - 510 route de Montchal - 42360 PANISSIÈRES - FRANCE - +33 4 77 27 60 60
(Showroom) Le LAB' SOTEXPRO - 4 rue du Mail - 75002 PARIS - FRANCE

Non-contractual photos and colors - Indicative fitting - Fitting may vary depending on support selected