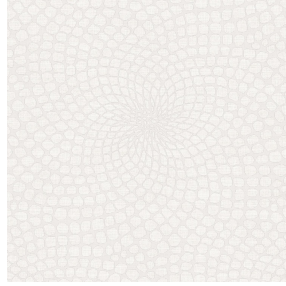




**OPAQ BPI 00**  
Printing support



**MELODY Naturel 26**  
Print pattern



## Printing support **OPAQ BPI 00** Print pattern **MELODY Naturel 26**

Unclassified blackout print support

### Technical properties

**Applications** Roman blinds - Panel curtains - Lining - Curtains

**Composition** 100% polyester with white flocked acrylic backing

**Weight** 280 g/m<sup>2</sup>

**Width** 280 cm

**Fabric direction** Room High Direction

**Fitting** ↔ 0.0 cm ↓ 0.0 cm

**Maintenance advice**     

**Label**

**Minimum order** 25 linear(s) meter(s)



Visual not taking into account the printing medium, the final rendering may vary according to the chosen medium.

## Technical characteristics

### Optical index

Light reflexion :	<b>82 %</b>
Light absorption :	<b>18 %</b>
Light transmission :	<b>0 %</b>

### Thermal index

Solar reflexion :	<b>74 %</b>
Solar absorption :	<b>26 %</b>
Solar transmission :	<b>0 %</b>
UV transmission :	<b>0 %</b>
Gtot :	<b>Gt 33 % Fc 55 %</b>

### Resilience

Lightfastness (units Class/8)	<b>5</b>
Dimensional Stability (%)	
Warp	<b>-0,5</b>
Weft	<b>0</b>
Breaking Elongation	
Warp	<b>26</b>
Weft	<b>15</b>
Breaking load (daN)	
Warp	<b>62</b>
Weft	<b>31</b>

# Print pattern MELODY



MELODY Vanille 51



MELODY Fuchsia 33



MELODY Anis 62



MELODY Lin 11



MELODY Orange 15



MELODY Ficelle 09



MELODY Turquoise 53



MELODY Acier 18



(Headquarters) SOTEXPRO - 510 route de Montchal - 42360 PANISSIÈRES - FRANCE - +33 4 77 27 60 60  
(Showroom) Le LAB' SOTEXPRO - 4 rue du Mail - 75002 PARIS - FRANCE

*Non-contractual photos and colors - Indicative fitting - Fitting may vary depending on support selected*