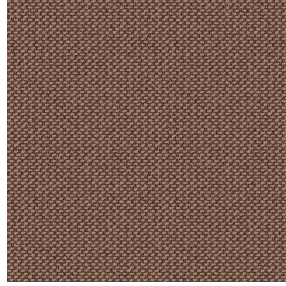




POL 00
Printing support



METIS Chamois 111
Print pattern



Printing support **POL 00** Print pattern **METIS Chamois 111**

Print support.

Technical properties



Flame retardant

Applications Bedspreads - Lining - Bed runners

Composition 100% polyester

Weight 80 g/m²

Width 180 cm

Fabric direction Standard Direction

Fitting ↔ 0.0 cm ↓ 0.0 cm

Maintenance advice     

Label France Terre Textile

Minimum order 25 linear(s) meter(s)



Visual not taking into account the printing medium, the final rendering may vary according to the chosen medium.

Technical characteristics

Flame retardant

NF 12952

Optical index

Light reflexion : 0 %

Light absorption : 0 %

Light transmission : 0 %

Thermal index

Solar reflexion : 0 %

Solar absorption : 0 %

Solar transmission : 0 %

UV transmission : 0 %

Gtot : **Gt 0 % Fc 0 %**

Resilience

Lightfastness (units Class/8) 0

Martindale (Cycles) 0

Breaking Elongation

Warp 0

Weft 0

Breaking load (daN)

Warp 0

Weft 0

Print pattern METIS



METIS Gentiane 16



METIS Absinthe 132



METIS Noir 10



METIS Citrouille 136



METIS Chanvre 72



METIS Gris 97



METIS Bergamote 121



METIS Violine 105



METIS Perle 96



METIS Céladon 135



METIS Lin 11



METIS Sienne 29



METIS Lagon 110



METIS Cobalt 114



METIS Framboise 81



METIS Abricot 08



METIS Ivoire 115



METIS Ficelle 09



METIS Rose 129



METIS Parme 79



(Headquarters) SOTEXPRO - 510 route de Montchal - 42360 PANISSIÈRES - FRANCE - +33 4 77 27 60 60
(Showroom) Le LAB' SOTEXPRO - 4 rue du Mail - 75002 PARIS - FRANCE

Non-contractual photos and colors - Indicative fitting - Fitting may vary depending on support selected

Print pattern METIS



METIS Cactus 36



METIS Hortensia 134



METIS Naturel 26



METIS Chaudron 118



(Headquarters) SOTEXPRO - 510 route de Montchal - 42360 PANISSIÈRES - FRANCE - +33 4 77 27 60 60
(Showroom) Le LAB' SOTEXPRO - 4 rue du Mail - 75002 PARIS - FRANCE

Non-contractual photos and colors - Indicative fitting - Fitting may vary depending on support selected