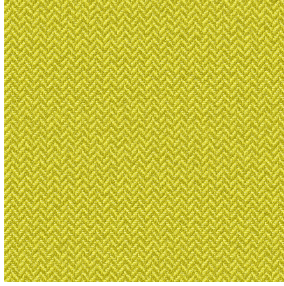




POL 00
Printing support



SCOURTIN Bergamote 121
Print pattern

Printing support **POL 00** Print pattern **SCOURTIN Bergamote 121**

Print support.

Technical properties



Flame retardant

Applications Bedspreads - Lining - Bed runners

Composition 100% polyester

Weight 80 g/m²

Width 180 cm


Fabric direction Standard Direction

Fitting ↔ 0.0 cm ↑ 0.0 cm

Maintenance advice     

Label France Terre Textile

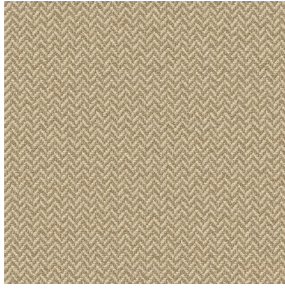
Minimum order 25 linear(s) meter(s)

 Visual not taking into account the printing medium, the final rendering may vary according to the chosen medium.

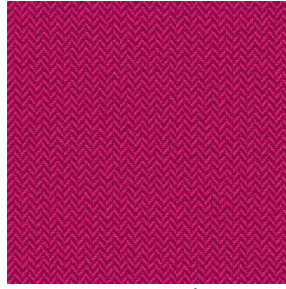
Technical characteristics

| | | |
|-----------------|-------------------------------|---------------|
| Flame retardant | NF 12952 | |
| Optical index | Light reflexion : | 0 % |
| | Light absorption : | 0 % |
| | Light transmission : | 0 % |
| Thermal index | Solar reflexion : | 0 % |
| | Solar absorption : | 0 % |
| | Solar transmission : | 0 % |
| | UV transmission : | 0 % |
| | Gtot : | Gt 0 % Fc 0 % |
| Resilience | Lightfastness (units Class/8) | 0 |
| | Martindale (Cycles) | 0 |
| | Breaking Elongation | |
| | Warp | 0 |
| | Weft | 0 |
| | Breaking load (daN) | |
| | Warp | 0 |
| | Weft | 0 |

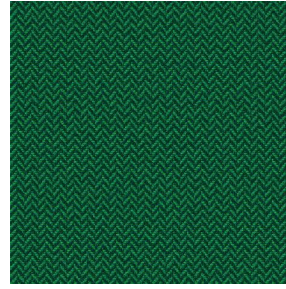
Print pattern SCOURTIN



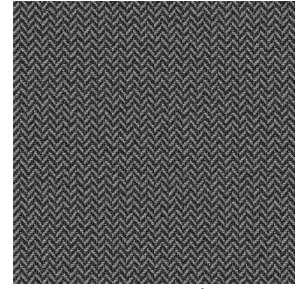
SCOURTIN Beige 63



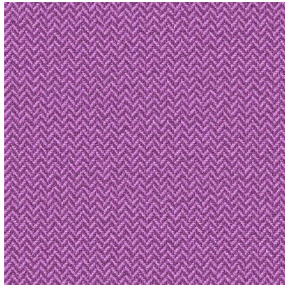
SCOURTIN Fuchsia 33



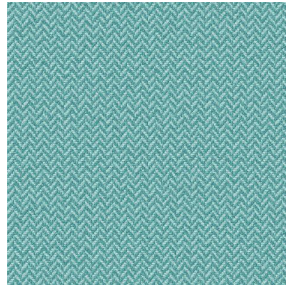
SCOURTIN Sapin 126



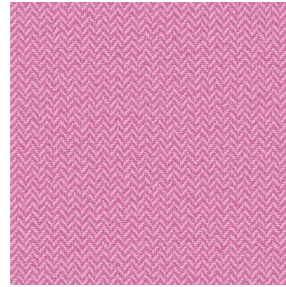
SCOURTIN Anthracite
38



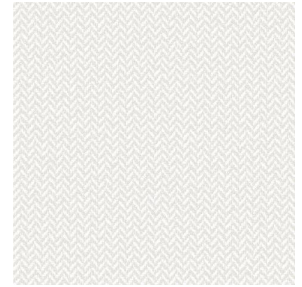
SCOURTIN Violine 105



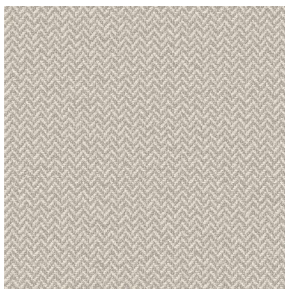
SCOURTIN Pacifique 54



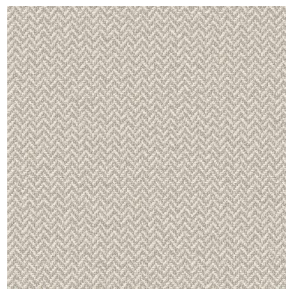
SCOURTIN Rose 129



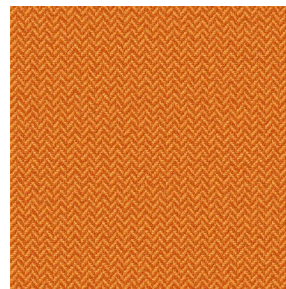
SCOURTIN Blanc 01



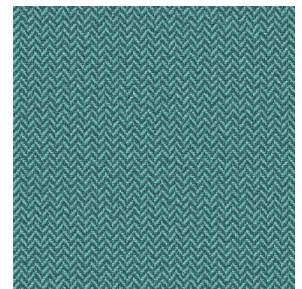
SCOURTIN Lin 11



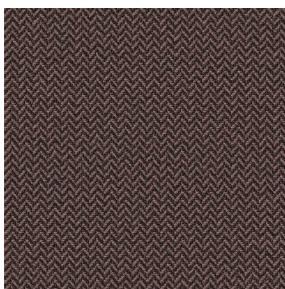
SCOURTIN Naturel 26



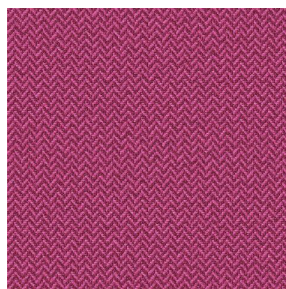
SCOURTIN Citrouille
136



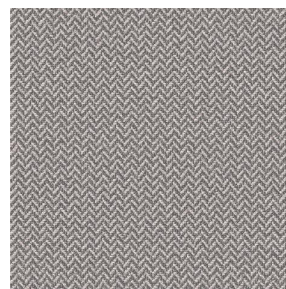
SCOURTIN Turquoise 53



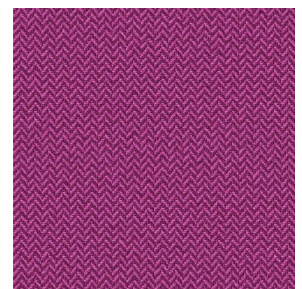
SCOURTIN Brun 23



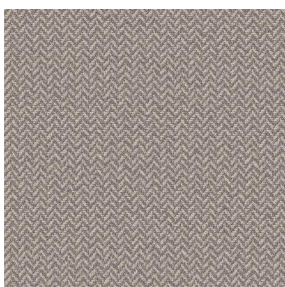
SCOURTIN Hortensia
134



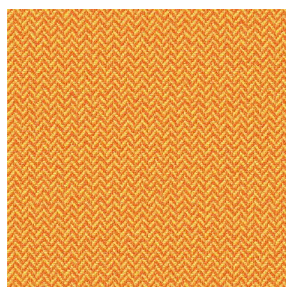
SCOURTIN Orage 123



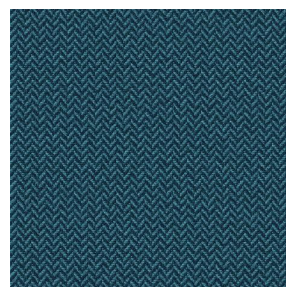
SCOURTIN Rubis 59



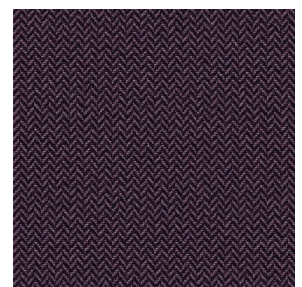
SCOURTIN Ficelle 09



SCOURTIN Maïs 37



SCOURTIN Céladon 135



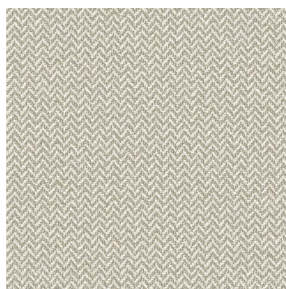
SCOURTIN Ebene 113



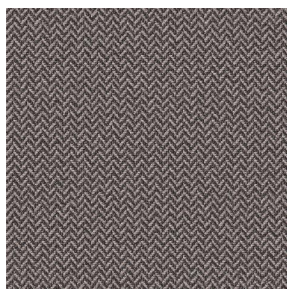
(Headquarters) SOTEXPRO - 510 route de Montchal - 42360 PANISSIÈRES - FRANCE - +33 4 77 27 60 60
(Showroom) Le LAB' SOTEXPRO - 4 rue du Mail - 75002 PARIS - FRANCE

Non-contractual photos and colors - Indicative fitting - Fitting may vary depending on support selected

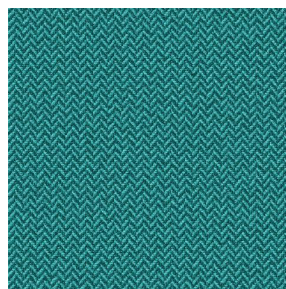
Print pattern SCOURTIN



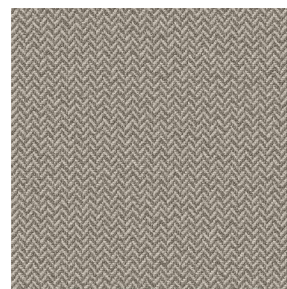
SCOURTIN Tourterelle
138



SCOURTIN Titanium 98



SCOURTIN Lagon 110



SCOURTIN Gris 97



(Headquarters) SOTEXPRO - 510 route de Montchal - 42360 PANISSIÈRES - FRANCE - +33 4 77 27 60 60
(Showroom) Le LAB' SOTEXPRO - 4 rue du Mail - 75002 PARIS - FRANCE

Non-contractual photos and colors - Indicative fitting - Fitting may vary depending on support selected