



POL 00  
Printing support



YENDI Anis 62  
Print pattern



## Printing support POL 00 Print pattern YENDI Anis 62

Print support.

### Technical properties



Flame retardant

**Applications** Bedspreads - Lining - Bed runners




**Composition** 100% polyester

**Weight** 80 g/m<sup>2</sup>

**Width** 180 cm

**Fabric direction** Standard Direction

**Fitting** ↔ 24.0 cm ↓ 20.0 cm

**Maintenance advice**     

**Label** France Terre Textile

**Minimum order** 25 linear(s) meter(s)

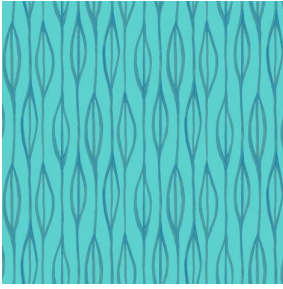


Visual not taking into account the printing medium, the final rendering may vary according to the chosen medium.

## Technical characteristics

Flame retardant	NF 12952	
Optical index	Light reflexion :	0 %
	Light absorption :	0 %
	Light transmission :	0 %
Thermal index	Solar reflexion :	0 %
	Solar absorption :	0 %
	Solar transmission :	0 %
	UV transmission :	0 %
	Gtot :	Gt 0 % Fc 0 %
Resilience	Lightfastness (units Class/8)	0
	Martindale (Cycles)	0
	Breaking Elongation	
	Warp	0
	Weft	0
	Breaking load (daN)	
	Warp	0
	Weft	0

# Print pattern YENDI



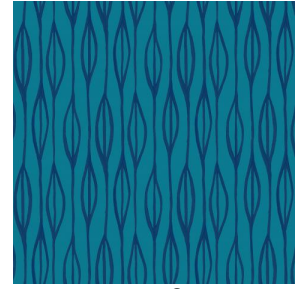
YENDI Lagon 110



YENDI Lilas 19



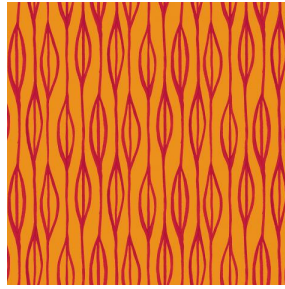
YENDI Opéra 104



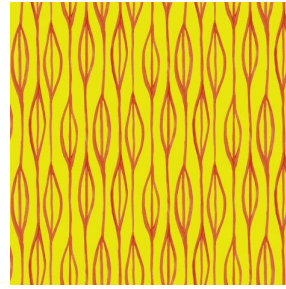
YENDI Pacifique 54



YENDI Sapin 126



YENDI Sanguine 05



YENDI Soleil 127



YENDI Terre 107



(Headquarters) SOTEXPRO - 510 route de Montchal - 42360 PANISSIÈRES - FRANCE - +33 4 77 27 60 60  
(Showroom) Le LAB' SOTEXPRO - 4 rue du Mail - 75002 PARIS - FRANCE

Non-contractual photos and colors - Indicative fitting - Fitting may vary depending on support selected