



POL 00
Printing support



CALI Naturel 26
Print pattern

Printing support POL 00 Print pattern CALI Naturel 26

Print support.

Technical properties



Flame retardant

Applications Bedspreads - Lining - Bed runners

Composition 100% polyester

Weight 80 g/m²

Width 180 cm

Fabric direction Standard Direction

Fitting ↔ 33.0 cm ↓ 33.0 cm

Maintenance advice     

Label France Terre Textile

Minimum order 25 linear(s) meter(s)



Visual not taking into account the printing medium, the final rendering may vary according to the chosen medium.

Technical characteristics

| | | |
|-----------------|-------------------------------|----------------------|
| Flame retardant | NF 12952 | |
| Optical index | Light reflexion : | 0 % |
| | Light absorption : | 0 % |
| | Light transmission : | 0 % |
| Thermal index | Solar reflexion : | 0 % |
| | Solar absorption : | 0 % |
| | Solar transmission : | 0 % |
| | UV transmission : | 0 % |
| | Gtot : | Gt 0 % Fc 0 % |
| Resilience | Lightfastness (units Class/8) | 0 |
| | Martindale (Cycles) | 0 |
| | Breaking Elongation | |
| | Warp | 0 |
| | Weft | 0 |
| | Breaking load (daN) | |
| | Warp | 0 |
| Weft | 0 | |

Print pattern CALI



CALI Orange 15



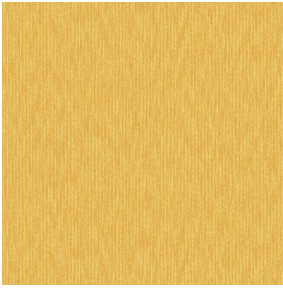
CALI Terracotta 65



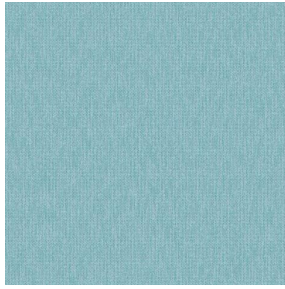
CALI Jade 116



CALI Lierre 24



CALI Soleil 127



CALI Etang 165



(Headquarters) SOTEXPRO - 510 route de Montchal - 42360 PANISSIÈRES - FRANCE - +33 4 77 27 60 60
(Showroom) Le LAB' SOTEXPRO - 4 rue du Mail - 75002 PARIS - FRANCE

Non-contractual photos and colors - Indicative fitting - Fitting may vary depending on support selected