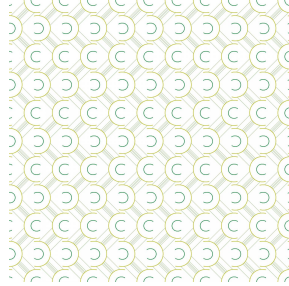
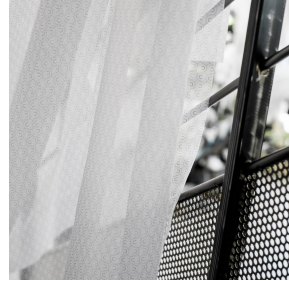




**POL BPI 00**  
Printing support



**VARELY Printemps 130**  
Print pattern



## Printing support **POL BPI 00** Print pattern **VARELY Printemps 130**

Print support.

### Technical properties



Flame retardant

**Applications** Bedspreads - Lining - Bed runners

**Composition** 100% polyester

**Weight** 80 g/m<sup>2</sup>

**Width** 280 cm

**Fabric direction** Room High Direction

**Fitting** ↔ 0.0 cm ↓ 0.0 cm

**Maintenance advice**     

**Label** France Terre Textile

**Minimum order** 25 linear(s) meter(s)



Visual not taking into account the printing medium, the final rendering may vary according to the chosen medium.

## Technical characteristics

Flame retardant

NF 12952

Optical index

Light reflexion : 0 %

Light absorption : 0 %

Light transmission : 0 %

Thermal index

Solar reflexion : 0 %

Solar absorption : 0 %

Solar transmission : 0 %

UV transmission : 0 %

Gtot : **Gt 0 % Fc 0 %**

Resilience

Lightfastness (units Class/8) 0

Martindale (Cycles) 0

Breaking Elongation

Warp 0

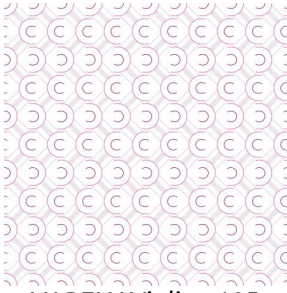
Weft 0

Breaking load (daN)

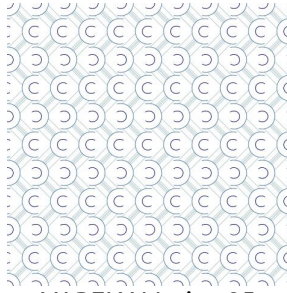
Warp 0

Weft 0

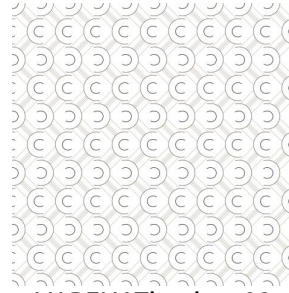
# Print pattern VARELY



VARELY Violine 105



VARELY Marine 25



VARELY Titanium 98



(Headquarters) SOTEXPRO - 510 route de Montchal - 42360 PANISSIÈRES - FRANCE - +33 4 77 27 60 60  
(Showroom) Le LAB' SOTEXPRO - 4 rue du Mail - 75002 PARIS - FRANCE

*Non-contractual photos and colors - Indicative fitting - Fitting may vary depending on support selected*