



POL BPI 00
Printing support



SABLE Ivoire 115
Print pattern



Visual not taking into account the printing medium, the final rendering may vary according to the chosen medium.

Printing support **POL BPI 00** Print pattern **SABLE Ivoire 115**

Print support.

Technical properties



Flame retardant

Applications Bedspreads - Lining - Bed runners



Composition 100% polyester

Weight 80 g/m²

Width 280 cm

Fabric direction Room High Direction

Fitting ↔ 0.0 cm ↓ 0.0 cm

Maintenance advice     

Label France Terre Textile

Minimum order 25 linear(s) meter(s)

Technical characteristics

| | | |
|-----------------|-------------------------------|----------------------|
| Flame retardant | NF 12952 | |
| Optical index | Light reflexion : | 0 % |
| | Light absorption : | 0 % |
| | Light transmission : | 0 % |
| Thermal index | Solar reflexion : | 0 % |
| | Solar absorption : | 0 % |
| | Solar transmission : | 0 % |
| | UV transmission : | 0 % |
| | Gtot : | Gt 0 % Fc 0 % |
| Resilience | Lightfastness (units Class/8) | 0 |
| | Martindale (Cycles) | 0 |
| | Breaking Elongation | |
| | Warp | 0 |
| | Weft | 0 |
| | Breaking load (daN) | |
| | Warp | 0 |
| Weft | 0 | |

Print pattern SABLE



SABLE Lin 11



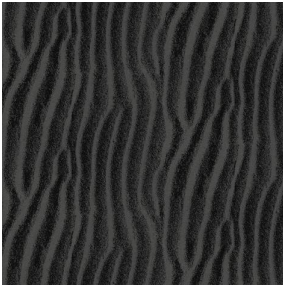
SABLE Rose 129



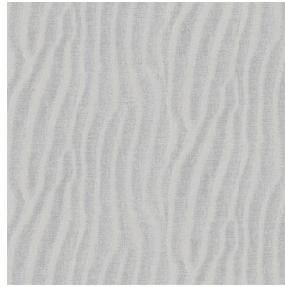
SABLE Sable 67



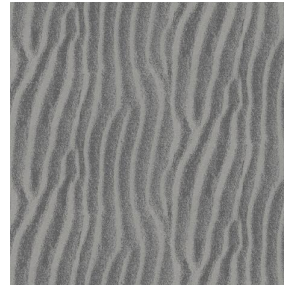
SABLE Absinthe 132



SABLE Noir 10



SABLE Souris 31



SABLE Gris 97



SABLE Jasmin 74



(Headquarters) SOTEXPRO - 510 route de Montchal - 42360 PANISSIÈRES - FRANCE - +33 4 77 27 60 60
(Showroom) Le LAB' SOTEXPRO - 4 rue du Mail - 75002 PARIS - FRANCE

Non-contractual photos and colors - Indicative fitting - Fitting may vary depending on support selected