



**POL BPI 00**  
Printing support



**SCOURTIN Rubis 59**  
Print pattern



## Printing support **POL BPI 00** Print pattern **SCOURTIN Rubis 59**

Print support.

### Technical properties



Flame retardant

**Applications** Bedspreads - Lining - Bed runners

**Composition** 100% polyester

**Weight** 80 g/m<sup>2</sup>

**Width** 280 cm

**Fabric direction** Room High Direction

**Fitting** ↔ 0.0 cm ↓ 0.0 cm

**Maintenance advice**     

**Label** France Terre Textile

**Minimum order** 25 linear(s) meter(s)



Visual not taking into account the printing medium, the final rendering may vary according to the chosen medium.

## Technical characteristics

Flame retardant	NF 12952	
Optical index	Light reflexion :	0 %
	Light absorption :	0 %
	Light transmission :	0 %
Thermal index	Solar reflexion :	0 %
	Solar absorption :	0 %
	Solar transmission :	0 %
	UV transmission :	0 %
	Gtot :	<b>Gt 0 % Fc 0 %</b>
Resilience	Lightfastness (units Class/8)	0
	Martindale (Cycles)	0
	Breaking Elongation	
	Warp	0
	Weft	0
	Breaking load (daN)	
	Warp	0
Weft	0	



# Print pattern SCOURTIN



SCOURTIN Beige 63



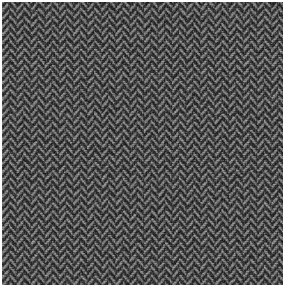
SCOURTIN Fuchsia 33



SCOURTIN Sapin 126



SCOURTIN Bergamote  
121



SCOURTIN Anthracite  
38



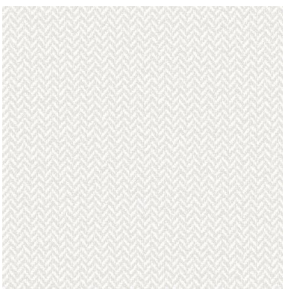
SCOURTIN Violine 105



SCOURTIN Pacifique 54



SCOURTIN Rose 129



SCOURTIN Blanc 01



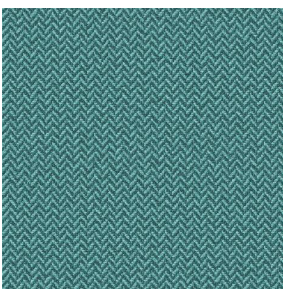
SCOURTIN Lin 11



SCOURTIN Naturel 26



SCOURTIN Citrouille  
136



SCOURTIN Turquoise 53



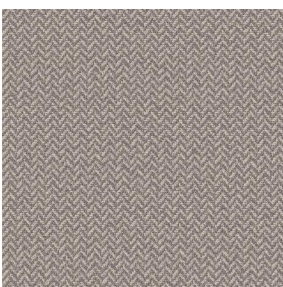
SCOURTIN Brun 23



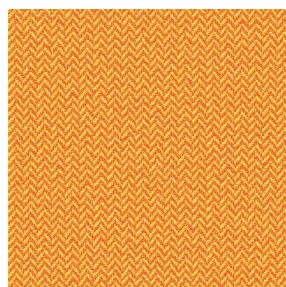
SCOURTIN Hortensia  
134



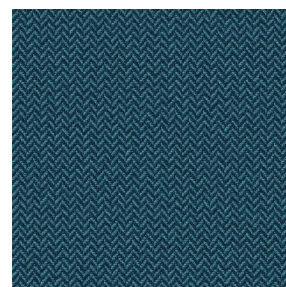
SCOURTIN Orage 123



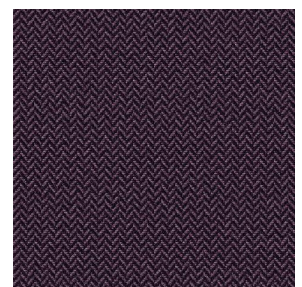
SCOURTIN Ficelle 09



SCOURTIN Maïs 37



SCOURTIN Céladon 135



SCOURTIN Ebene 113



(Headquarters) SOTEXPRO - 510 route de Montchal - 42360 PANISSIÈRES - FRANCE - +33 4 77 27 60 60  
(Showroom) Le LAB' SOTEXPRO - 4 rue du Mail - 75002 PARIS - FRANCE

Non-contractual photos and colors - Indicative fitting - Fitting may vary depending on support selected



## Print pattern SCOURTIN



SCOURTIN Tourterelle  
138



SCOURTIN Titanium 98



SCOURTIN Lagon 110



SCOURTIN Gris 97



(Headquarters) SOTEXPRO - 510 route de Montchal - 42360 PANISSIÈRES - FRANCE - +33 4 77 27 60 60  
(Showroom) Le LAB' SOTEXPRO - 4 rue du Mail - 75002 PARIS - FRANCE

Non-contractual photos and colors - Indicative fitting - Fitting may vary depending on support selected