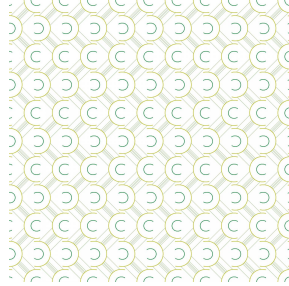




POL BPI 00
Printing support



VARELY Printemps 130
Print pattern



Printing support **POL BPI 00** Print pattern **VARELY Printemps 130**

Print support.

Technical properties



Flame retardant

Applications Bedspreads - Lining - Bed runners

Composition 100% polyester

Weight 80 g/m²

Width 280 cm

Fabric direction Room High Direction

Fitting ↔ 0.0 cm ↓ 0.0 cm

Maintenance advice     

Label France Terre Textile

Minimum order 25 linear(s) meter(s)



Visual not taking into account the printing medium, the final rendering may vary according to the chosen medium.

Technical characteristics

Flame retardant

NF 12952

Optical index

Light reflexion : 0 %

Light absorption : 0 %

Light transmission : 0 %

Thermal index

Solar reflexion : 0 %

Solar absorption : 0 %

Solar transmission : 0 %

UV transmission : 0 %

Gtot : **Gt 0 % Fc 0 %**

Resilience

Lightfastness (units Class/8) 0

Martindale (Cycles) 0

Breaking Elongation

Warp 0

Weft 0

Breaking load (daN)

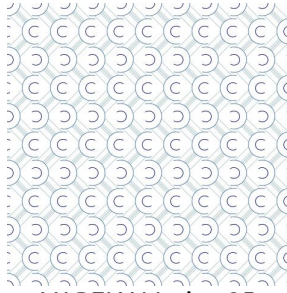
Warp 0

Weft 0

Print pattern VARELY



VARELY Violine 105



VARELY Marine 25



VARELY Titanium 98



(Headquarters) SOTEXPRO - 510 route de Montchal - 42360 PANISSIÈRES - FRANCE - +33 4 77 27 60 60
(Showroom) Le LAB' SOTEXPRO - 4 rue du Mail - 75002 PARIS - FRANCE

Non-contractual photos and colors - Indicative fitting - Fitting may vary depending on support selected