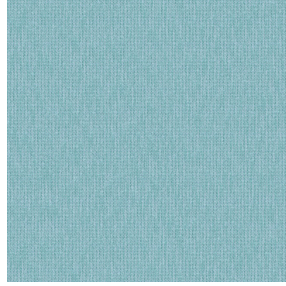




POL BPI 00
Printing support



CALI Etang 165
Print pattern

Printing support **POL BPI 00** Print pattern **CALI Etang 165**

Print support.

Technical properties



Flame retardant

Applications Bedspreads - Lining - Bed runners

Composition 100% polyester

Weight 80 g/m²

Width 280 cm

Fabric direction Room High Direction

Fitting ↔ 33.0 cm ↓ 33.0 cm

Maintenance advice     

Label France Terre Textile

Minimum order 25 linear(s) meter(s)



Visual not taking into account the printing medium, the final rendering may vary according to the chosen medium.

Technical characteristics

Flame retardant	NF 12952	
Optical index	Light reflexion :	0 %
	Light absorption :	0 %
	Light transmission :	0 %
Thermal index	Solar reflexion :	0 %
	Solar absorption :	0 %
	Solar transmission :	0 %
	UV transmission :	0 %
	Gtot :	Gt 0 % Fc 0 %
Resilience	Lightfastness (units Class/8)	0
	Martindale (Cycles)	0
	Breaking Elongation	
	Warp	0
	Weft	0
	Breaking load (daN)	
	Warp	0
Weft	0	

Print pattern CALI



CALI Orange 15



CALI Terracotta 65



CALI Jade 116



CALI Lierre 24



CALI Soleil 127



CALI Naturel 26



(Headquarters) SOTEXPRO - 510 route de Montchal - 42360 PANISSIÈRES - FRANCE - +33 4 77 27 60 60
(Showroom) Le LAB' SOTEXPRO - 4 rue du Mail - 75002 PARIS - FRANCE

Non-contractual photos and colors - Indicative fitting - Fitting may vary depending on support selected