



SATIN BPI 00
Printing support



ODE Lilas 19
Print pattern



Visual not taking into account the printing medium, the final rendering may vary according to the chosen medium.

Printing support **SATIN BPI 00** Print pattern **ODE Lilas 19**

Light-filtering support for digital printing.

Technical properties



Flame retardant

Applications Roman blinds - Panel curtains - Curtains

Composition 100% FR polyester

Weight 220 g/m²

Width 140 cm

Fabric direction Standard Direction

Fitting ↔ 50.0 cm ↓ 50.0 cm

Maintenance advice     

Label France Terre Textile / OEKO-TEX STANDARD 100

Minimum order 25 linear(s) meter(s)

Technical characteristics

Flame retardant

M1 / B1 / IMO PASS

Resilience

Dimensional Stability (%)

Warp -1

Weft -1

Breaking Elongation

Warp 42

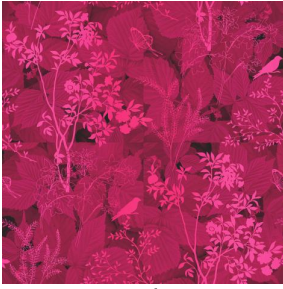
Weft 22

Breaking load (daN)

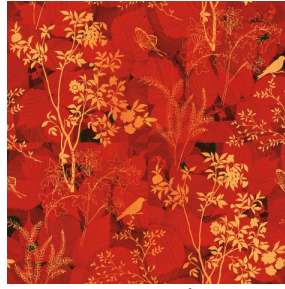
Warp 160

Weft 140

Print pattern ODE



ODE Fuchsia 33



ODE Corail 14



ODE Bleu 41



ODE Turquoise 53



(Headquarters) SOTEXPRO - 510 route de Montchal - 42360 PANISSIÈRES - FRANCE - +33 4 77 27 60 60
(Showroom) Le LAB' SOTEXPRO - 4 rue du Mail - 75002 PARIS - FRANCE

Non-contractual photos and colors - Indicative fitting - Fitting may vary depending on support selected