



SATIN BPI 00
Printing support



ELAINA Lin 11
Print pattern



Printing support **SATIN BPI 00** Print pattern **ELAINA Lin 11**

Light-filtering support for digital printing.

Technical properties



Flame retardant

Applications Roman blinds - Panel curtains - Curtains

Composition 100% FR polyester

Weight 220 g/m²

Width 140 cm

Fabric direction Standard Direction

Fitting ↔ 0.0 cm ↓ 0.0 cm

Maintenance advice     

Label France Terre Textile / OEKO-TEX STANDARD 100

Minimum order 25 linear(s) meter(s)



Visual not taking into account the printing medium, the final rendering may vary according to the chosen medium.

Technical characteristics

Flame retardant

M1 / B1 / IMO PASS

Resilience

Dimensional Stability (%)

Warp -1

Weft -1

Breaking Elongation

Warp 42

Weft 22

Breaking load (daN)

Warp 160

Weft 140

Print pattern ELAINA



ELAINA Gris 91



ELAINA Violine 105



ELAINA Ocre 03



ELAINA Bergamote 121



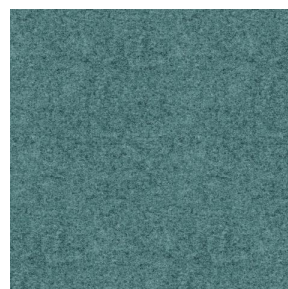
ELAINA Rose 129



ELAINA Pacifique 54



ELAINA Beige 63



ELAINA Céladon 135



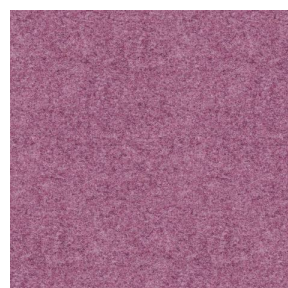
ELAINA Saphir 106



ELAINA Anis 62



ELAINA Rouge 21



ELAINA Hortensia 134



ELAINA Prairie 125



ELAINA Graphite 77



ELAINA Lierre 124



ELAINA Naturel 26



ELAINA Genêt 06



ELAINA Ivoire 115



ELAINA Gentiane 16



ELAINA Navy 120



(Headquarters) SOTEXPRO - 510 route de Montchal - 42360 PANISSIÈRES - FRANCE - +33 4 77 27 60 60
(Showroom) Le LAB' SOTEXPRO - 4 rue du Mail - 75002 PARIS - FRANCE

Non-contractual photos and colors - Indicative fitting - Fitting may vary depending on support selected

Print pattern ELAINA



ELAINA Chamois 111



ELAINA Turquoise 53



ELAINA Anthracite 38



ELAINA Fiesta 131



(Headquarters) SOTEXPRO - 510 route de Montchal - 42360 PANISSIÈRES - FRANCE - +33 4 77 27 60 60
(Showroom) Le LAB' SOTEXPRO - 4 rue du Mail - 75002 PARIS - FRANCE

Non-contractual photos and colors - Indicative fitting - Fitting may vary depending on support selected