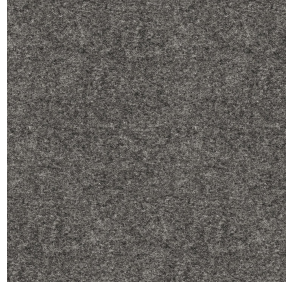




**SATIN BPI 00**  
Printing support



**ELAINA Anthracite 38**  
Print pattern



## Printing support **SATIN BPI 00** Print pattern **ELAINA Anthracite 38**

Light-filtering support for digital printing.

### Technical properties



Flame retardant

**Applications** Roman blinds - Panel curtains - Curtains

**Composition** 100% FR polyester

**Weight** 220 g/m<sup>2</sup>

**Width** 140 cm

**Fabric direction** Standard Direction

**Fitting** ↔ 0.0 cm ↓ 0.0 cm

**Maintenance advice**     

**Label** France Terre Textile / OEKO-TEX STANDARD 100

**Minimum order** 25 linear(s) meter(s)



Visual not taking into account the printing medium, the final rendering may vary according to the chosen medium.

## Technical characteristics

Flame retardant

M1 / B1 / IMO PASS

Resilience

Dimensional Stability (%)

Warp -1

Weft -1

Breaking Elongation

Warp 42

Weft 22

Breaking load (daN)

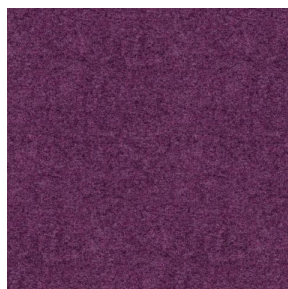
Warp 160

Weft 140

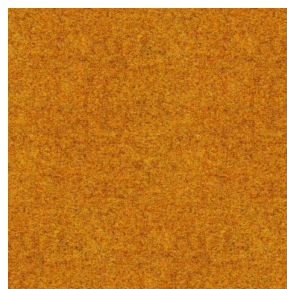
# Print pattern ELAINA



ELAINA Gris 91



ELAINA Violine 105



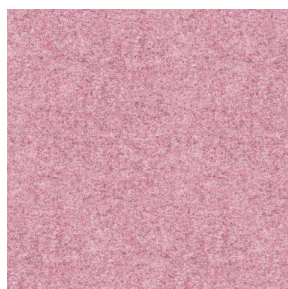
ELAINA Ocre 03



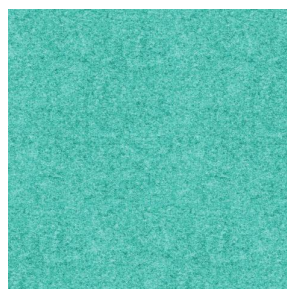
ELAINA Lin 11



ELAINA Bergamote 121



ELAINA Rose 129



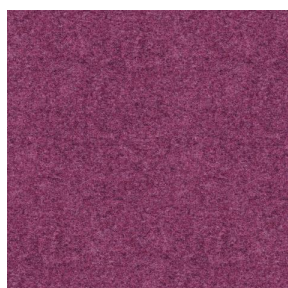
ELAINA Pacifique 54



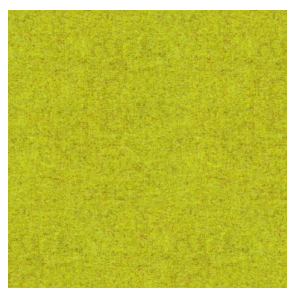
ELAINA Beige 63



ELAINA Céladon 135



ELAINA Saphir 106



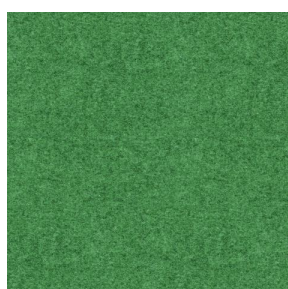
ELAINA Anis 62



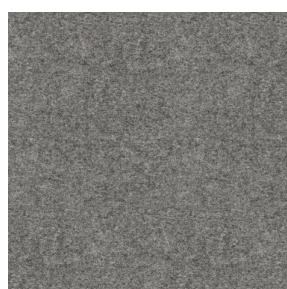
ELAINA Rouge 21



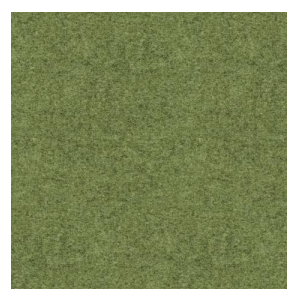
ELAINA Hortensia 134



ELAINA Prairie 125



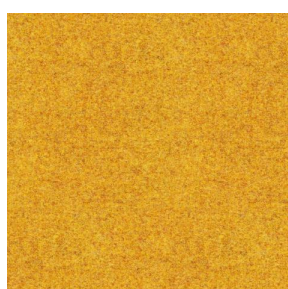
ELAINA Graphite 77



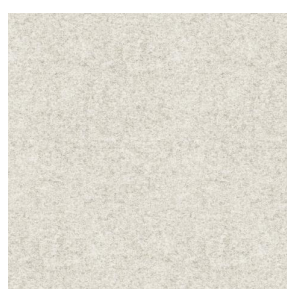
ELAINA Lierre 124



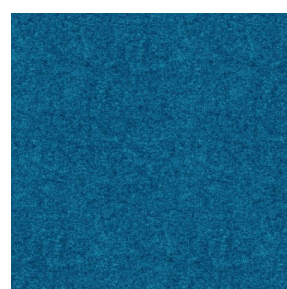
ELAINA Naturel 26



ELAINA Genêt 06



ELAINA Ivoire 115



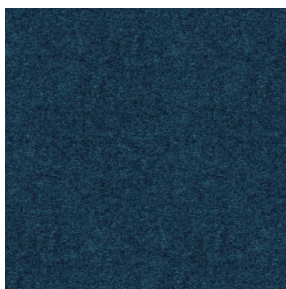
ELAINA Gentiane 16



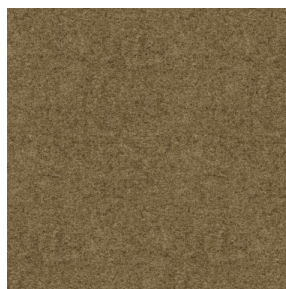
(Headquarters) SOTEXPRO - 510 route de Montchal - 42360 PANISSIÈRES - FRANCE - +33 4 77 27 60 60  
(Showroom) Le LAB' SOTEXPRO - 4 rue du Mail - 75002 PARIS - FRANCE

Non-contractual photos and colors - Indicative fitting - Fitting may vary depending on support selected

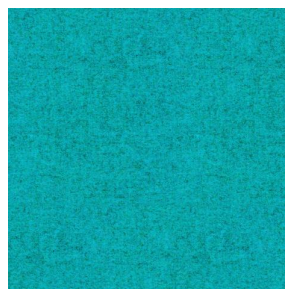
## Print pattern ELAINA



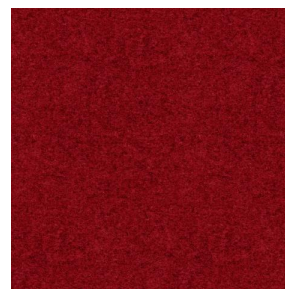
ELAINA Navy 120



ELAINA Chamois 111



ELAINA Turquoise 53



ELAINA Fiesta 131



(Headquarters) SOTEXPRO - 510 route de Montchal - 42360 PANISSIÈRES - FRANCE - +33 4 77 27 60 60  
(Showroom) Le LAB' SOTEXPRO - 4 rue du Mail - 75002 PARIS - FRANCE

*Non-contractual photos and colors - Indicative fitting - Fitting may vary depending on support selected*