



**SATIN BPI 00**  
Printing support



**ANATOLE Or 94**  
Print pattern



## Printing support **SATIN BPI 00** Print pattern **ANATOLE Or 94**

Light-filtering support for digital printing.

### Technical properties



Flame retardant

**Applications** Roman blinds - Panel curtains - Curtains

**Composition** 100% FR polyester

**Weight** 220 g/m<sup>2</sup>

**Width** 140 cm

**Fabric direction** Standard Direction

**Fitting** ↔ 0.0 cm ↓ 0.0 cm

**Maintenance advice**     

**Label** France Terre Textile / OEKO-TEX STANDARD 100

**Minimum order** 25 linear(s) meter(s)



Visual not taking into account the printing medium, the final rendering may vary according to the chosen medium.

## Technical characteristics

Flame retardant

M1 / B1 / IMO PASS

Resilience

Dimensional Stability (%)

Warp -1

Weft -1

Breaking Elongation

Warp 42

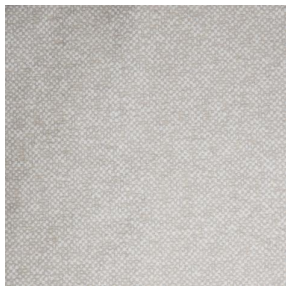
Weft 22

Breaking load (daN)

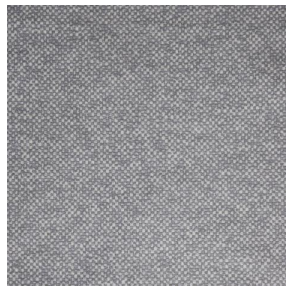
Warp 160

Weft 140

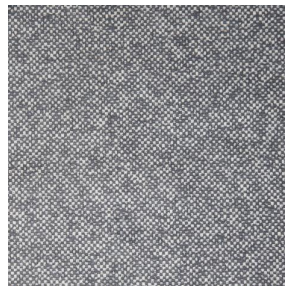
# Print pattern ANATOLE



ANATOLE Naturel 26



ANATOLE lin 11



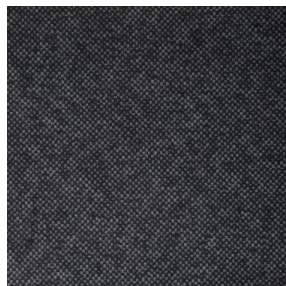
ANATOLE Ficelle 09



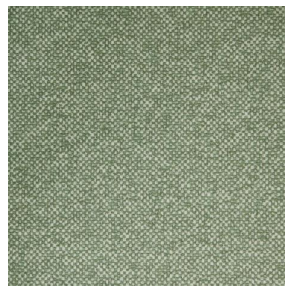
ANATOLE Celadon 135



ANATOLE Océan 91



ANATOLE Titanium 98



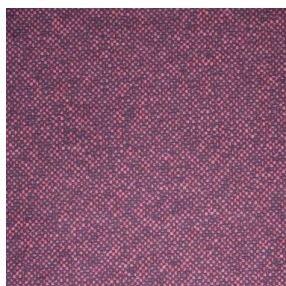
ANATOLE Cactus 36



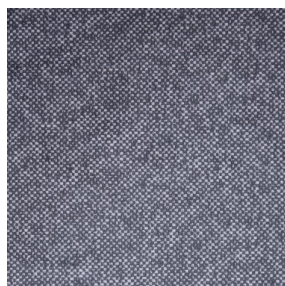
ANATOLE mousse 92



ANATOLE Chaudron  
118



ANATOLE Amarante  
108



ANATOLE Taupe 95



(Headquarters) SOTEXPRO - 510 route de Montchal - 42360 PANISSIÈRES - FRANCE - +33 4 77 27 60 60  
(Showroom) Le LAB' SOTEXPRO - 4 rue du Mail - 75002 PARIS - FRANCE

*Non-contractual photos and colors - Indicative fitting - Fitting may vary depending on support selected*