



SATIN BPI 00
Printing support



ANATOLE Naturel 26
Print pattern



Printing support **SATIN BPI 00** Print pattern **ANATOLE Naturel 26**

Light-filtering support for digital printing.

Technical properties



Flame retardant

Applications Roman blinds - Panel curtains - Curtains

Composition 100% FR polyester

Weight 220 g/m²

Width 140 cm

Fabric direction Standard Direction

Fitting ↔ 0.0 cm ↓ 0.0 cm

Maintenance advice     

Label France Terre Textile / OEKO-TEX STANDARD 100

Minimum order 25 linear(s) meter(s)



Visual not taking into account the printing medium, the final rendering may vary according to the chosen medium.

Technical characteristics

Flame retardant

M1 / B1 / IMO PASS

Resilience

Dimensional Stability (%)

Warp -1

Weft -1

Breaking Elongation

Warp 42

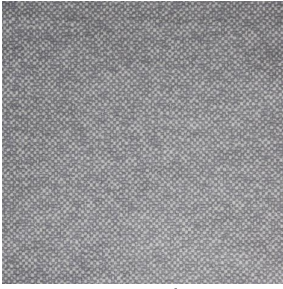
Weft 22

Breaking load (daN)

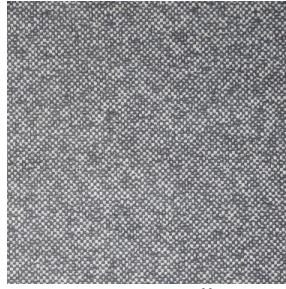
Warp 160

Weft 140

Print pattern ANATOLE



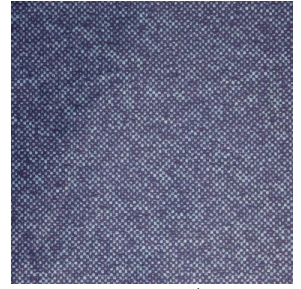
ANATOLE lin 11



ANATOLE Ficelle 09



ANATOLE Celadon 135



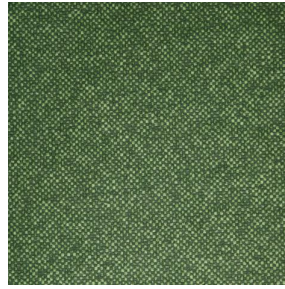
ANATOLE Océan 91



ANATOLE Titanium 98



ANATOLE Cactus 36



ANATOLE mousse 92



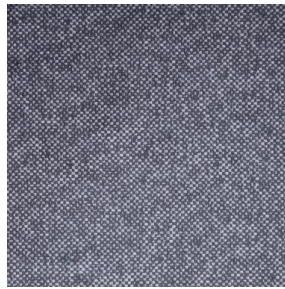
ANATOLE Or 94



ANATOLE Chaudron
118



ANATOLE Amarante
108



ANATOLE Taupe 95



(Headquarters) SOTEXPRO - 510 route de Montchal - 42360 PANISSIÈRES - FRANCE - +33 4 77 27 60 60
(Showroom) Le LAB' SOTEXPRO - 4 rue du Mail - 75002 PARIS - FRANCE

Non-contractual photos and colors - Indicative fitting - Fitting may vary depending on support selected