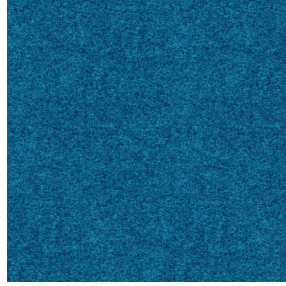




SATIN BPI 00
Printing support



ELAINA Gentiane 16
Print pattern



Printing support **SATIN BPI 00** Print pattern **ELAINA Gentiane 16**

Light-filtering support for digital printing.

Technical properties



Flame retardant

Applications Roman blinds - Panel curtains - Curtains

Composition 100% FR polyester

Weight 220 g/m²

Width 140 cm

Fabric direction Standard Direction

Fitting ↔ 0.0 cm ↓ 0.0 cm

Maintenance advice     

Label France Terre Textile / OEKO-TEX STANDARD 100

Minimum order 25 linear(s) meter(s)



Visual not taking into account the printing medium, the final rendering may vary according to the chosen medium.

Technical characteristics

Flame retardant

M1 / B1 / IMO PASS

Resilience

Dimensional Stability (%)

Warp -1

Weft -1

Breaking Elongation

Warp 42

Weft 22

Breaking load (daN)

Warp 160

Weft 140

Print pattern ELAINA



ELAINA Gris 91



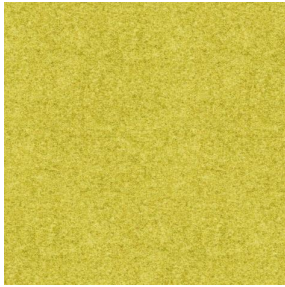
ELAINA Violine 105



ELAINA Ocre 03



ELAINA Lin 11



ELAINA Bergamote 121



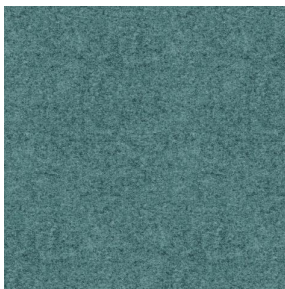
ELAINA Rose 129



ELAINA Pacifique 54



ELAINA Beige 63



ELAINA Céladon 135



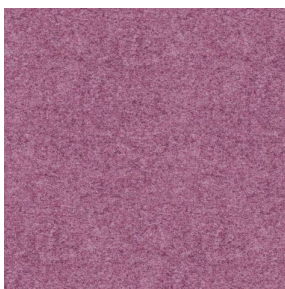
ELAINA Saphir 106



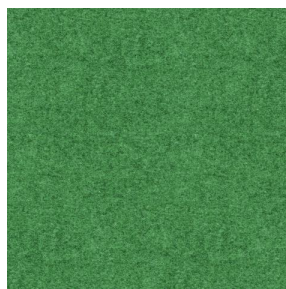
ELAINA Anis 62



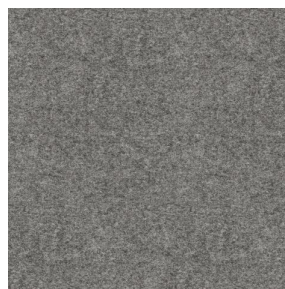
ELAINA Rouge 21



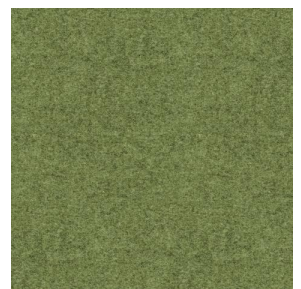
ELAINA Hortensia 134



ELAINA Prairie 125



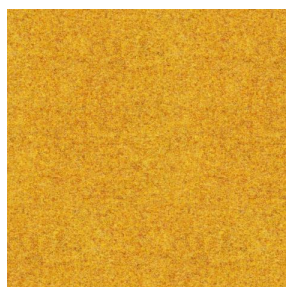
ELAINA Graphite 77



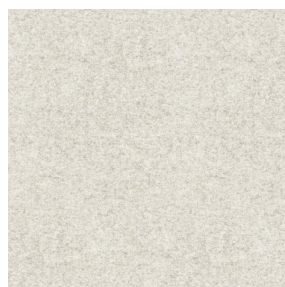
ELAINA Lierre 124



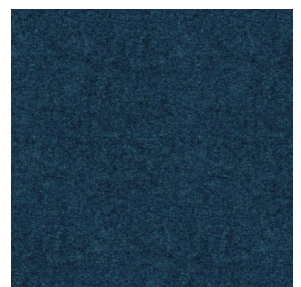
ELAINA Naturel 26



ELAINA Genêt 06



ELAINA Ivoire 115



ELAINA Navy 120



(Headquarters) SOTEXPRO - 510 route de Montchal - 42360 PANISSIÈRES - FRANCE - +33 4 77 27 60 60
(Showroom) Le LAB' SOTEXPRO - 4 rue du Mail - 75002 PARIS - FRANCE

Non-contractual photos and colors - Indicative fitting - Fitting may vary depending on support selected

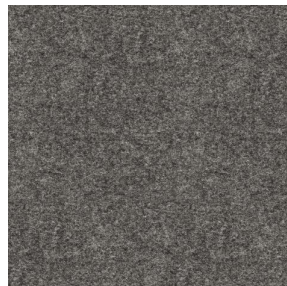
Print pattern ELAINA



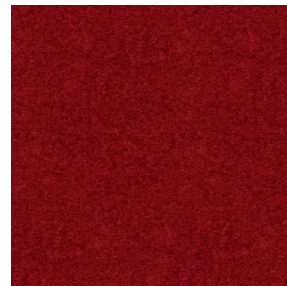
ELAINA Chamois 111



ELAINA Turquoise 53



ELAINA Anthracite 38



ELAINA Fiesta 131



(Headquarters) SOTEXPRO - 510 route de Montchal - 42360 PANISSIÈRES - FRANCE - +33 4 77 27 60 60
(Showroom) Le LAB' SOTEXPRO - 4 rue du Mail - 75002 PARIS - FRANCE

Non-contractual photos and colors - Indicative fitting - Fitting may vary depending on support selected