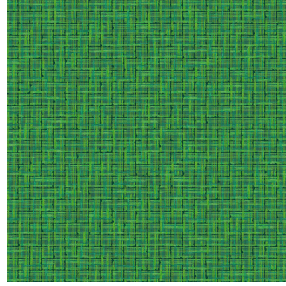




SATIN BPI 00
Printing support



SALIN Vert 24
Print pattern



Printing support **SATIN BPI 00** Print pattern **SALIN Vert 24**

Light-filtering support for digital printing.

Technical properties



Flame retardant

Applications Curtains - Roman blinds - Panel curtains


Composition 100% FR polyester

Weight 220 g/m²

Width 280 cm

Fabric direction Room High Direction

Fitting ↔ 0.0 cm ↓ 0.0 cm

Maintenance advice     

Label France Terre Textile / OEKO-TEX STANDARD 100

Minimum order 25 linear(s) meter(s)



Visual not taking into account the printing medium, the final rendering may vary according to the chosen medium.

Technical characteristics

Flame retardant

M1 / B1 / IMO PASS

Resilience

Dimensional Stability (%)

Warp -1

Weft -1

Breaking Elongation

Warp 42

Weft 22

Breaking load (daN)

Warp 160

Weft 140

Print pattern SALIN



SALIN Abricot 08



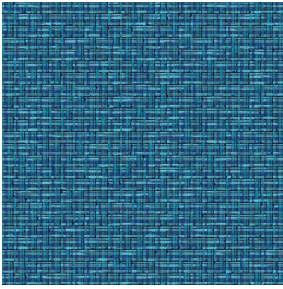
SALIN Anis 62



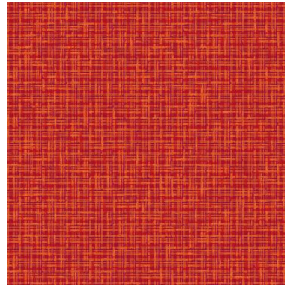
SALIN Fuchsia 33



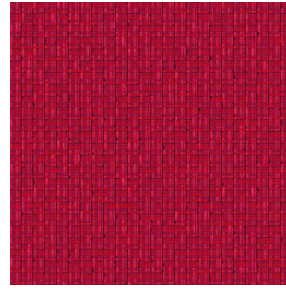
SALIN Naturel 26



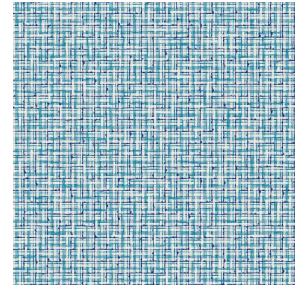
SALIN Océan 91



SALIN Orange 15



SALIN Rouge 21



SALIN Turquoise 53



(Headquarters) SOTEXPRO - 510 route de Montchal - 42360 PANISSIÈRES - FRANCE - +33 4 77 27 60 60
(Showroom) Le LAB' SOTEXPRO - 4 rue du Mail - 75002 PARIS - FRANCE

Non-contractual photos and colors - Indicative fitting - Fitting may vary depending on support selected