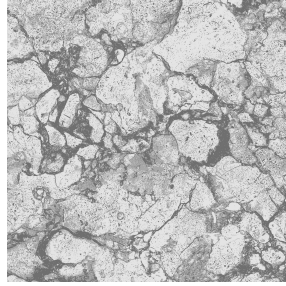




SATIN BPI 00
Printing support



CARRARA Gris 97
Print pattern



Visual not taking into account the printing medium, the final rendering may vary according to the chosen medium.

Printing support **SATIN BPI 00** Print pattern **CARRARA Gris 97**

Light-filtering support for digital printing.

Technical properties



Flame retardant

Applications Roman blinds - Panel curtains - Curtains

Composition 100% FR polyester

Weight 220 g/m²

Width 280 cm

Fabric direction Room High Direction

Fitting ↔ 0.0 cm ↓ 0.0 cm

Maintenance advice     

Label France Terre Textile / OEKO-TEX STANDARD 100

Minimum order 25 linear(s) meter(s)

Technical characteristics

Flame retardant

M1 / B1 / IMO PASS

Resilience

Dimensional Stability (%)

Warp -1

Weft -1

Breaking Elongation

Warp 42

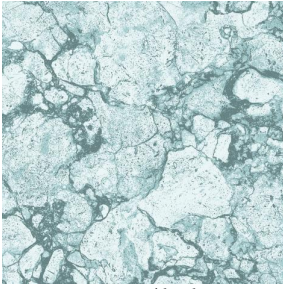
Weft 22

Breaking load (daN)

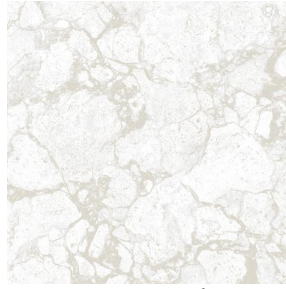
Warp 160

Weft 140

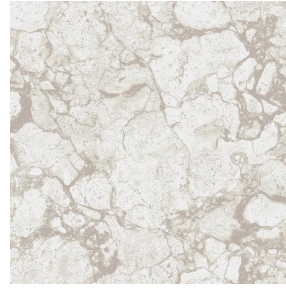
Print pattern CARRARA



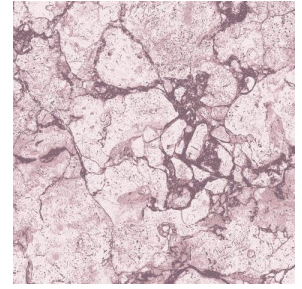
CARRARA Céladon 135



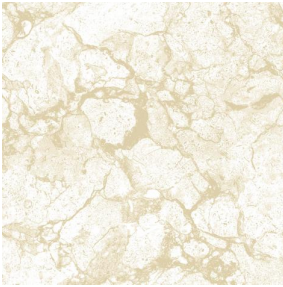
CARRARA Perle 96



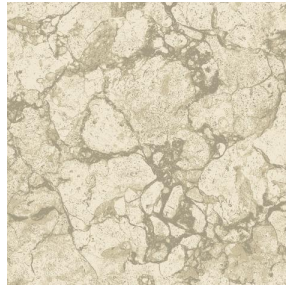
CARRARA Lin 11



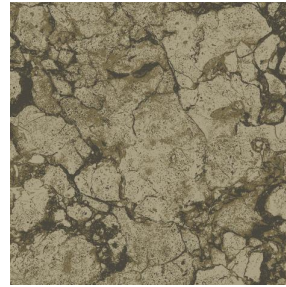
CARRARA Vieux rose 64



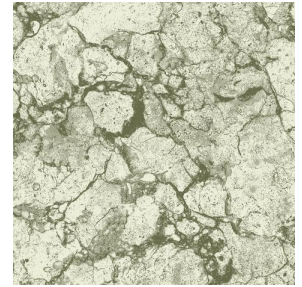
CARRARA Naturel 26



CARRARA Ficelle 09



CARRARA Chamois 111



CARRARA Absinthe 132



(Headquarters) SOTEXPRO - 510 route de Montchal - 42360 PANISSIÈRES - FRANCE - +33 4 77 27 60 60
(Showroom) Le LAB' SOTEXPRO - 4 rue du Mail - 75002 PARIS - FRANCE

Non-contractual photos and colors - Indicative fitting - Fitting may vary depending on support selected