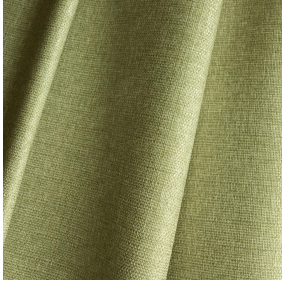




SATIN BPI 00
Printing support



MUNA Tilleul 103
Print pattern



Printing support **SATIN BPI 00** Print pattern **MUNA Tilleul 103**

Light-filtering support for digital printing.

Technical properties



Flame retardant

Applications Roman blinds - Panel curtains - Curtains

Composition 100% FR polyester

Weight 220 g/m²

Width 280 cm

Fabric direction Room High Direction

Fitting ↔ 0.0 cm ↓ 0.0 cm

Maintenance advice     

Label France Terre Textile / OEKO-TEX STANDARD 100

Minimum order 25 linear(s) meter(s)



Visual not taking into account the printing medium, the final rendering may vary according to the chosen medium.

Technical characteristics

Flame retardant

M1 / B1 / IMO PASS

Resilience

Dimensional Stability (%)

Warp -1

Weft -1

Breaking Elongation

Warp 42

Weft 22

Breaking load (daN)

Warp 160

Weft 140

Print pattern MUNA



MUNA Cactus 36



MUNA soleil 90



MUNA gris 97



MUNA lin 11



MUNA Melon 22



MUNA souris 31



MUNA lagon 110



MUNA jade 116



MUNA terre 107



MUNA céladon 135



MUNA Coco 142



MUNA Sable 67



MUNA Saumon 143



MUNA Sisal 140



MUNA Tourterelle 138



MUNA Ardoise 87



MUNA Chanvre 72



MUNA Graphite 77



MUNA Olive 61



MUNA Lierre 124



(Headquarters) SOTEXPRO - 510 route de Montchal - 42360 PANISSIÈRES - FRANCE - +33 4 77 27 60 60
(Showroom) Le LAB' SOTEXPRO - 4 rue du Mail - 75002 PARIS - FRANCE

Non-contractual photos and colors - Indicative fitting - Fitting may vary depending on support selected

Print pattern MUNA



MUNA Indigo 144



MUNA Sienne 29



MUNA Rouge 21



MUNA Saphir 106



MUNA Violine 105



MUNA Titanium 98



MUNA Acier 18



(Headquarters) SOTEXPRO - 510 route de Montchal - 42360 PANISSIÈRES - FRANCE - +33 4 77 27 60 60
(Showroom) Le LAB' SOTEXPRO - 4 rue du Mail - 75002 PARIS - FRANCE

Non-contractual photos and colors - Indicative fitting - Fitting may vary depending on support selected